

# EXPLORE Waynesboro

GREATER  
**WAYNESBORO**  
CHAMBER of COMMERCE



2023

**WELCOME GUIDE AND  
MEMBERSHIP DIRECTORY**





**NOBODY BEATS A**  
**BUCHANAN DEAL!**  
 THE AREA'S LARGEST SELECTION OF VEHICLES!

*Buchanan is Better!*  
 Better Prices. Better Service. Better Selection.

**Buchanan Bear-ly Used Cars**

**10 YEAR 100K MILE  
POWERTRAIN WARRANTY**  
 The area's best standard coverage EXCLUSIVELY on  
 Pre-Owned Inventory under 6 years old and 80,000 miles.

**ONLY AT  
BUCHANAN!**

**PLUS** Buchanan is home  
to the original...

**LOWEST  
GUARANTEED!  
Or We'll Pay You \$1,000!**

**ATTENTION: RECIEVE AN ADDITIONAL  
\$500 OFF**  
**WHEN YOU PRESENT THIS COUPON!**  
 You must surrender coupon at time of use. One coupon per trade-in. See dealer for complete details.

VALID AT

**11582 Buchanan Trail East • Waynesboro, PA 17268**  
**(717) 749-4194**  
 www.BuchananAutoPark.com • Find Us On: [f](#) [t](#)

**1035 East Main Street • Waynesboro, PA 17268**  
**(717) 400-6852**  
 www.BuchananAutomotiveInc.com • Find Us On: [f](#) [t](#)



Photo © Andy Smetzer

# 2023

## TABLE OF CONTENTS

Our Chamber.....	4
Our Community .....	8
Government.....	18
Local Education.....	26
Business and Industry.....	32
Living Well .....	42
Keeping the Faith .....	50
The Great Outdoors.....	54
Do   Dine   Stay.....	62
Community Resources .....	74
Membership Directory .....	82
Alphabetical Membership .....	110



CONNECT WITH US | #GROWWBO



# A great place TO LIVE, WORK AND PLAY

## WELCOME TO WAYNESBORO!

Away from the bustle... close to the fun! Welcome to the greater Waynesboro area – where the city comes to relax. Whether you are looking to relocate your home or business, visiting, or just briefly passing through, I invite you to use this community guide to explore all that this area has to offer.

The greater Waynesboro area is a charming town full of rural heritage, unique architecture, historic landmarks, flourishing arts scene and thriving business and industry. Waynesboro was once ranked one of the 10 Best Places to Retire in Pennsylvania by the Real Estate Blog. The blog also named Waynesboro a top town in Pennsylvania for weather.

We love it here and think you will, too. Whether the reason you're here is for business or pleasure, welcome to our cozy town – where you'll soon discover is a great place to *live, work and play*.

Sincerely,

Jackie

## OUR MISSION

Enhancing our community by fostering business success, building connections, and providing resources.

## OUR STAFF

Jackie Mowen, Executive Director  
director@waynesboro.org | 717-762-7123

Sean Bockstie, Assistant Director  
admin@waynesboro.org | 717-762-7123

## STOP BY

118 Walnut St  
Waynesboro, PA, 17268  
Monday - Friday  
9 am - 4:30 pm





# Growing a vibrant BUSINESS COMMUNITY

## OUR CHAMBER

The Greater Waynesboro Chamber of Commerce provides its members with a multitude of opportunities to help improve a company's bottom line, expand its network, strengthen employees' professional skills, and better expose the company's brand to other businesses and the community at-large.

A chamber membership is a business's badge of credibility as an ethical, reliable company and demonstrates that company's commitment to working together with the chamber to improve the socio-economic well-being of the greater Waynesboro area.

## OUR BOARD OF DIRECTORS



Sid Creager  
Mussleman and Creager, President



Andy Everetts  
M&T Bank, Vice President



Lesley Quesada  
LQ Design LLC, Past President



Mark McLaughlin, Jr.  
McLaughlin Energy Services, Secretary



Evelyn Farnsworth  
F&M Trust, Treasurer



Mayor Richard Starliper  
Borough of Waynesboro



Derek Furry  
Bartlett Tree Experts



Erin Shank  
State Farm Insurance



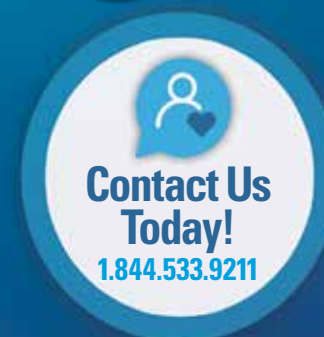
James Pryor  
WellSpan



You Deserve

# Better Banking!

Through the ups  
and the downs, we  
remain here for our  
customers.



**Middletown  
Valley Bank**

A Community Heritage Financial, Inc. Company



Member  
**FDIC**

[www.mvbbank.com](http://www.mvbbank.com)



# Our Community

Livability.com names Waynesboro as one of 11 Up-and-Coming cities in Pennsylvania that deserves a second look. Journalist Brittany Anas writes, "Once a major stopover between Baltimore and Pittsburgh, Waynesboro became a spot for rapid growth during the Industrial Revolution. The Franklin County community was bustling with tool and machine makers, and railroad resorts for travelers popped up alongside homes. Today, young professionals are falling for the charm of the historic homes that fill the area, and, armed with restoration prowess, are giving old buildings some TLC. Once again, location is a major advantage for the economy in Waynesboro and the surrounding region. With proximity to Interstate 81, the county is well-connected to major metropolitan regions and has a diverse economy with manufacturing, health care, education, retail and hospitality sectors. The area's year-over-year job growth has increased 1.8 percent and wage growth has gone up 2.8 percent. Judging by the increase in home values, more people are finding out about Waynesboro and its modern shops, golf courses and fantastic food scene."

## Population By Municipality

- » Mont Alto Borough: 1,580
- » Quincy Township: 5,318
- » Waynesboro Borough: 10,951
- » Washington Township: 14,897

**\*Total Population: 32,740**

\*2020 Decennial Census

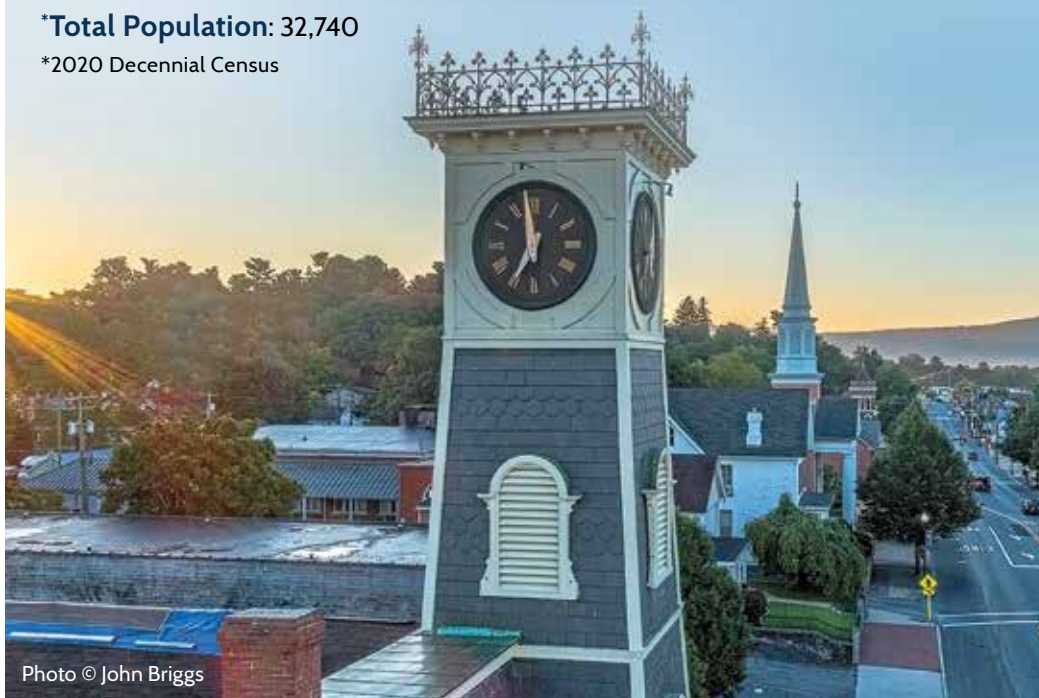


Photo © John Briggs



**McLaughlin's**  
*Energy Services*

Heating Oils and Propane Gas · Family Operated for Over 65 Years

**11931 Buchanan Trail East, Waynesboro, PA 17268**

**717-762-5711 • [www.MCLHEAT.com](http://www.MCLHEAT.com)**

# Our Weather

How's the weather here? Great! Good enough, in fact, that Movoto Real Estate blog named Waynesboro a top town for weather in Pennsylvania with weather not prone to catastrophic proportions. Summers are warm with an average July temperature of 83 degrees. Winters are often mild with an average January temperature of 46 degrees.

Residents here enjoy picnics amidst budding flora in spring, lazy afternoon swims and rounds of golf during summer, walks under canopies of amber and scarlet foliage in fall and snowman building and sledding beneath clear winter skies.



Photo © John Briggs





**AFS Insurance**  
& Financial Services

*Your Trusted  
Independent  
Insurance  
Agency*

**KEYSTONE**

11001 Anthony Hwy // Waynesboro, PA 17268  
717-762-5780 // [www.afsagent.com](http://www.afsagent.com)

## Mont Alto Borough

717-749-5808 | [www.montaltoborough.com](http://www.montaltoborough.com)

Borough Office 3 N. Main Street, Mont Alto, PA 17237

Elected Officials Borough Council, Mayor



Mont Alto was founded in 1762 as Funkstown by early settler John Funk. The Mont Alto Railroad was built in 1872 to facilitate transportation of products. Soon after, in 1879, Funkstown and the neighboring village of Alto Dale combined to become Mont Alto. The Borough of Mont Alto was incorporated in 1913.

Legend has it that abolitionist John Brown lived in Franklin County and occasionally taught Sunday School at Emmanuel Episcopal

Church in Mont Alto, now located at the edge of the Penn State Mont Alto Campus.

Dr. Joseph T. Rothrock established the Mont Alto Forest Academy in 1903. It became annexed by the Borough of Mont Alto and in 1959, Penn State Mont Alto began offering courses.

### Statistics & Info

- » Zip Code: 17237
- » Total Households: 684
- » Median Household Income: \$62,429
- » Median Age: 36
- » Population: 1,580

## Quincy Township

717-762-5679 | [www.quincytwp.org](http://www.quincytwp.org)

Township Office 7575 Mentzer Gap Road, Waynesboro, PA 17268

Elected Officials Township Supervisors



Founded in 1800, Quincy Township shares a municipal boundary with the Borough of Mont Alto. In 1878, through the energies of G.B. Weistling and others, the Mont Alto Railroad was extended to Waynesboro through Quincy Township. Many historic homes and buildings still stand in the

township, which is host to numerous farms and orchards.

The Western part of Quincy Township is part of the Great Appalachian Valley, an agricultural area with elevations in the township ranging from 650 to 1,100 feet, while the eastern half is on the slopes and crest of South Mountain, the highest point of which is the summit of Snowy Mountain, with an elevation exceeding 2800 feet. The Appalachian Trail traverses the Eastern side of the township.

### Statistics & Info

- » Zip Code: 17268 (PO Boxes 17247)
- » Total Households: 2,220
- » Median Household Income: \$56,586
- » Median Age: 43
- » Population: 5,318



**QUINCY & WAYNECASTLE STORAGE**

CONTACT US:

[qwmastorage.com](http://qwmastorage.com)  
717-749-5944  
[storage@qwmastorage.com](mailto:storage@qwmastorage.com)



# Washington Township

717-762-3128 | [www.washtwp-franklin.org](http://www.washtwp-franklin.org)

Township Office 13013 Welty Road, Waynesboro, PA 17268

Elected Officials Township Supervisors



Consisting of 39.4 square miles surrounding the Borough of Waynesboro, Washington Township was organized in 1779. The township communities of Zullinger, Rouzerville, and Blue Ridge Summit were founded in 1868, while the area

of Wayne Heights was laid out in the early 20th century.

After the creation of the railroad, Blue Ridge Summit became a resort town, boasting luxurious hotel accommodations for the wealthy that traveled there from the Washington, D.C., region to vacation.

Today, Washington Township is home to a number of historic sites, including Renfrew Museum and Park, Harbaugh Church and Cemetery, Welty Mill Bridge, and the Civil War Battle of Monterey Pass.

## Statistics & Info

- » Zip Code: 17268
- » Median Age: 443
- » Total Households: 5,887
- » Population: 14,897
- » Median Household Income: \$65,946

**Residential & Commercial Paving**  
**Seal Coating & Excavating**  
**FREE ESTIMATES!**

**GANOE PAVING INC.**

1455 Buchanan Trail West  
Greencastle, PA 17225  
Dirk Mowen  
President - Owner  
717-597-2567  
[www.ganoepavinginc.com](http://www.ganoepavinginc.com)

# Waynesboro Borough

717-762-2101 | [www.waynesboropa.org](http://www.waynesboropa.org)

Borough Office 55 E. Main Street, Waynesboro, PA 17268

Elected Officials Borough Council, Mayor



Waynesboro was founded in 1749 when Scotsman John Wallace settled near the Antietam Creek. Wallace held title to 633 acres, almost one square mile. He called his land "Mount Vernon," while others referred to it as "Wallacetown." His son, John, later inherited the land after returning home from fighting in the Revolutionary War.

In 1797, John mapped out a town of 90 lots, which he named "Waynesburg" after his admired

commander, General "Mad" Anthony Wayne. The town's name was contested by several other Pennsylvania towns bearing the same name and the federal government soon ruled post offices in the same state could not have the same name. The town was incorporated as "Waynesborough," which in 1831 was shortened to "Waynesboro."

## Statistics & Info

- » Zip Code: 17268
- » Median Age: 37
- » Total Households: 5,243
- » Population: 10,951
- » Median Household Income: \$46,278

**R. LEE ROYER & ASSOCIATES**

**PENNSYLVANIA/MARYLAND LAND SURVEYING**

10764 BUCHANAN TRAIL EAST WAYNESBORO, PA

**717-762-5619 • [LEEROYERASSOCIATES@COMCAST.NET](mailto:LEEROYERASSOCIATES@COMCAST.NET)**

RE/MAX®

Thinking of  
SELLING OR  
BUYING?Trust the advice of  
*a professional*  
and call, email or  
text Arlene today!**ARLENE B. UNGER**Associate Broker,  
REALTOR®, CDPE, ABR, GRI**RE/MAX Results**

Office: 240-707-2300

Call or Text: 717-404-2680

Email: arleneungersells  
@gmail.com

www.arleneungersells.com

Licensed in PA, MD (ask me about WV)



# Historic Beginnings

## ON THE FRONTIER

As the years continued, Waynesboro became a crossroads town and prospered by providing goods and services for the wagon trains traveling west. According to local lore, during the French and Indian War, two young girls, the Renfrew sisters, were attacked and killed by Native Americans while washing laundry in a creek near their home. The tale tells us several townspeople banded together to find those responsible for the girls' deaths and obtain the girls' remains so a proper burial could take place.



All Photos © John Briggs

## CIVIL WAR INVOLVEMENT

During the Civil War in June 1863, Confederate troops preparing for the Battle of Gettysburg captured Waynesboro for 15 days, raising the Confederate flag above town and forcing citizens to provide food to the soldiers. The Battle of Monterey Pass occurred in Blue Ridge Summit just days after the Battle of Gettysburg. It was during this battle that George Armstrong Custer and his Michigan Calvary Brigade attacked and captured part of Robert E. Lee's retreating Army of Northern Virginia.





# Industry

The foundation of Waynesboro's industrial activity was laid by George Frick, whose invention of a small steam engine for farm use replaced cumbersome horsepower. He founded Frick Co., now known as Johnson Controls, in 1873, while brothers Abraham and Franklin Landis followed in his inventive footsteps. The Landis brothers not only manufactured the first cylindrical grinding machines in 1883, they also formed Landis Tool and Landis Machine, now known as Cinetic Landis Corp. and Landis Threading System, respectively.

Today, local industrial wealth is further enhanced by Beck Manufacturing, maker of pipe nipples and couplings and Manitowoc Crane Group.

## INDUSTRIAL MUSEUM

The **Waynesboro Area Industrial Heritage Trust** is found on a quiet Waynesboro side street in a former church built by Franklin Landis, one of the area's early industrial pioneers. Open to residents and visitors for special events and by appointment, the museum's mission is to provide insight into the community's rich industrial heritage.

Located at 235 Philadelphia Avenue, the museum houses a collection of locally significant artifacts, drawings, and photographs. For more information, call 717-762-4460 or visit: [industrialmuseum.weebly.com](http://industrialmuseum.weebly.com).



## The Chamber is More than Business It's About Community

Calendar  
of Events

**GREATER  
WAYNESBORO**  
CHAMBER of COMMERCE



Women's Conference

Chamber Card



Mayor and McGruff

Business Referrals  
& Resources



Nite at the Races

Welcome Bags



Golf Tournament

Community  
Development

Signature Events

**GREATER  
WAYNESBORO**  
CHAMBER of COMMERCE

Visit our website at [www.waynesboro.org](http://www.waynesboro.org),  
follow us on social media or stop by the office  
118 Walnut St. Waynesboro PA // 717-762-7123

# Local Government

## LEGISLATORS

### FRANKLIN COUNTY COMMISSIONERS



**David S. Keller, Chairman**  
**John Flannery**  
**Robert G. Ziobrowski**  
 272 N. Franklin St.  
 Chambersburg, PA 17201  
 717-264-4125  
[www.franklincountypa.gov](http://www.franklincountypa.gov)



**Pennsylvania House of Representatives**  
**State Rep. Paul Schemel**  
 1402 E. Main Street  
 Waynesboro, PA 17268  
 717-749-7384  
[www.repschemel.com](http://www.repschemel.com)



**Pennsylvania State Senator**  
**Retired Colonel Doug Mastriano**  
 37 South Main Street, Suite 200  
 Chambersburg, PA 17201  
 717-264-6100  
[www.senatormastriano.com](http://www.senatormastriano.com)



**Pennsylvania Governor**  
**Tom Wolf, term ends 2023**  
 Room 225  
 508 Main Capitol Building  
 Harrisburg, PA 17120  
 717-787-2500  
[www.pa.gov](http://www.pa.gov)



**U.S. House of Representatives**  
**Congressman**  
**Dr. John Joyce, term ends 2023**  
 100 Lincoln Way East  
 Chambersburg, PA 17201  
 717-753-6344  
[johnjoyce.house.gov](http://johnjoyce.house.gov)



**U.S. Senate**  
**Senator Pat Toomey, term ends 2022**  
 320 Market Street  
 Suite 475E  
 Harrisburg, PA 17101  
 717-782-3951  
[www.toomey.senate.gov](http://www.toomey.senate.gov)



**U.S. Senate**  
**Senator Bob Casey Jr., term ends 2022**  
 22 S. Third Street, Suite 6A  
 Harrisburg, PA 17101  
 717-231-7540  
[www.casey.senate.gov](http://www.casey.senate.gov)

Directory was printed prior to elections. For up-to-date information on your local government, visit [legis.state.pa.us](http://legis.state.pa.us).

**Looking to rent your place?**  
**Need a place to rent?**



**Antietam Realty Inc.**  
 Specializing in Property Management

Serving your real estate needs in  
 Franklin County for 30 years

10796 Buchanan Trail East  
 Waynesboro, PA 17268  
 717-765-8011

[www.AntietamRealtyInc.com](http://www.AntietamRealtyInc.com)

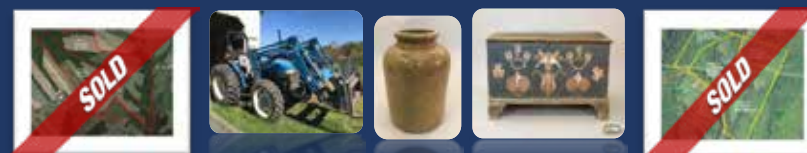
**Why Hurley Auctions?**

**RESULTS!**  
**RESULTS!**  
**RESULTS!**



- ✓ Over 2000 successful real estate auctions
- ✓ Over 2000 successful personal property auctions
- ✓ Over 500 successful online auctions
- ✓ Over 1500 appraisals completed

**Over 25 years in business**



Call Us Today 717.597.9100

[www.HURLEYAUCTIONS.com](http://www.HURLEYAUCTIONS.com)



# Putting Down Roots

Moving can be stressful and confusing. To help your transition to the area, please see the relocation information below.

## VEHICLE REGISTRATION NEEDS

Newcomers establishing residency are required to apply for a Pennsylvania title and registration for their vehicle(s) within 20 days of entering the commonwealth. To register, new residents must complete registration forms available to download at [dmv.state.pa.us](http://dmv.state.pa.us) or at any Pennsylvania Department of Transportation Driver's License center.

### » PennDOT Driver's License Center

Franklin Center Shopping Plaza  
1320 Lincoln Highway East  
Chambersburg, PA 17202  
800-932-4600 | [www.dmv.state.pa.us](http://www.dmv.state.pa.us)

### » Registration, Titles, Plates and Registration Renewal

Anthony Highway Auto Sales & Service  
11460 Anthony Highway  
Waynesboro, PA 17268  
717-765-4949 | [anthonyhwyauto@gmail.com](mailto:anthonyhwyauto@gmail.com)

CK Auto and Truck \*PA and MD  
1622 East Main Street  
Waynesboro, PA 17268  
717-404-9070 | [ckautoandtruck@yahoo.com](mailto:ckautoandtruck@yahoo.com)

Roger's Auto Sales  
7480 Anthony Highway  
Waynesboro, PA 17268  
717-762-2700 | [rogerautosales@comcast.net](mailto:rogerautosales@comcast.net)

When filing for vehicle registration(s) make sure you have with you:

- » A valid title for all vehicles you want to register
- » Proof of Pennsylvania insurance with effective and expiration dates
- » Tracing of the vehicle identification number (VIN) or the verification of the VIN by an inspection mechanic or notary public
- » Appropriate title, lien, registration fees and sales tax if applicable.

## SALES TAX

If you hold a valid title issued in another state and have owned the vehicle six months or more before moving to Pennsylvania, you will not be required to pay any sales tax when you register your vehicle.


If you hold a valid title issued in another state and have owned the vehicle less than 6 months before moving to Pennsylvania, you will need to provide proof of sales tax paid to the previous titling jurisdiction or remit PA sales tax.

## VEHICLE SAFETY INSPECTION

A newly-registered vehicle in Pennsylvania must receive a safety inspection within ten days of the registration date. Inspections are performed at official inspection stations (usually a repair garage or a service station with a repair shop.)

Equipment checks include: lights, brakes, horn, tires, safety belts, exhaust system, mirrors, tag mounting, suspension, turn signals, steering, glazing, wipers, and other major parts of your vehicle.


Inspection fees are posted at official inspection stations. These fees do not include repairs to correct vehicle defects.



20 East Sixth Street, Suite 206  
Waynesboro, PA 17268  
717-655-2676  
[www.skwlawoffice.com](http://www.skwlawoffice.com)

### AREAS OF PRACTICE

- Estate Planning
- Medicaid Planning
- Business Succession Planning
- Long-term Care Pre-Planning
- Asset Protection Planning
- Special Needs Planning
- Estate Administration & Probate



## EMISSION INSPECTION MAINTENANCE

Pennsylvania is one of many states required by the Federal Environmental Protection Agency to have a vehicle emissions inspection and maintenance program. The I/M program is a key part of the Commonwealth's strategy to improve its air quality.

Call the Drive Clean PA customer hotline at 1-800-265-0921 or visit its website at: [www.drivecleanpa.state.pa.us](http://www.drivecleanpa.state.pa.us) to find out if the county your vehicle is registered in is required to participate in the emissions inspection program.

## DRIVER'S LICENSES

New residents are required to obtain a Pennsylvania driver's license within 60 days of establishing a permanent residence. To apply, you must appear in person at your local DMV office to fill out forms and take a vision test. You will need to present:

- » A driver's license from your previous state of residence that is valid or has expired no more than six months earlier
- » Social Security Card if your Social Security Number does not appear on your license

If your license expired more than six months previously, you will have to present your birth certificate and Social Security Card; apply for a Pennsylvania Learner's Permit; and complete all required testing before you receive your license.

Once the license has been issued, you must surrender the license from your previous state of residence to personnel at the DMV.

## REAL ID

Beginning Beginning May 3, 2023, Pennsylvanians will need a REAL ID-compliant driver's license/photo ID card, or another form of federally acceptable identification (such as a valid passport or military ID) to board a domestic commercial flight or enter a federal building or military installation that requires ID.

## PHOTO IDENTIFICATION CARD

Residents of Pennsylvania 16 years of age and older are entitled to a photo identification card. These cards provide a viable source of identification in lieu of a driver's license. To apply at a license center, you will need to provide proof of name and birth date; two different forms validating your address; social security card; and a check or money order.

# LOCAL news is back!

# LocalNews1.org

Waynesboro • Mont Alto • Washington & Quincy Twp

## Getting involved is important.

At M&T Bank, we know how important it is to support those organizations that make life better in our communities. That's why we offer our time and resources, and encourage others to do the same. [Learn more at mtb.com/community](https://mtb.com/community).

M&T Bank is proud to support the Greater Waynesboro Chamber of Commerce.

**M&T Bank**  
Understanding what's important®

 Equal Housing Lender. ©2020 MGT Bank. Member FDIC.



**ELITE**  
*Window Fashions*

**HunterDouglas**  
window fashions  
Your supplier for custom  
blinds and window treatments

**VARNER CENTER • 2012 East Main Street**  
Waynesboro, PA 17268  
(717) 762-5627 • [myelitewindowfashions.com](http://myelitewindowfashions.com)

Serving Our Area  
for Over 30 Years!



Penny Waters and Lori Thompson





## PUBLIC NOTARY

In order for a notary public to notarize a document, the person whose signature is being notarized must sign the document in the notary's presence. Often, there is a fee to have a document notarized. The maximum amount a notary public may charge for services is regulated by state law.

### » Public Notary

Anthony Highway Auto Sales & Service  
11460 Anthony Highway  
Waynesboro, PA 17268  
717-765-4949 | [anthonyhwyauto@gmail.com](mailto:anthonyhwyauto@gmail.com)

CK Auto and Truck  
1622 East Main Street  
Waynesboro, PA 17268  
717-404-9070 | [ckautoandtruck@yahoo.com](mailto:ckautoandtruck@yahoo.com)

David M. Green Bookkeeping & Tax Service  
20 East 6th Street, Suite 303  
Waynesboro, PA 17268  
717-655-2560 | [www.dmgbookkeepingandtaxservice.com](http://www.dmgbookkeepingandtaxservice.com)

Roger's Auto Sales  
7480 Anthony Highway  
Waynesboro, PA 17268  
717-404-9070 | [rogerautosales@comcast.net](mailto:rogerautosales@comcast.net)

## YOUR VOTE COUNTS

When you visit the driver's license center, you will have the opportunity to register to vote. If you currently are a registered voter in the state of Pennsylvania, you will not need to re-register unless you have changed your name or address. If you do not register while at the driver's license center, voter registration forms can be printed from [votespa.com](http://votespa.com).

## TRASH COLLECTION

If you live in Waynesboro Borough, your trash and recycling automatically is collected weekly because of a contract the borough has with Waste Management. If you are a resident of Mont Alto, Quincy Township, or Washington Township, you will need to make your own arrangement for the disposal of trash and recyclables.

### » Washington Township Refuse Transfer & Recycling Center

12721 Buchanan Trail East  
Waynesboro, PA 17268  
717-762-4413

### » Waste Management

9446 Letzburg Road  
Greencastle, PA 17225  
866-909-4458

### » Borough Waste Management

Waynesboro, PA 17268  
717-762-2101

## COUNTY & LOCAL TAX OFFICES

### » Franklin County Area Tax Bureau

443 Stanley Avenue  
Chambersburg, PA 17201  
717-263-5141 | [www.chambersburgwagetax.com](http://www.chambersburgwagetax.com)

Franklin County Area Tax Bureau is a jointly-operated local government tax collection agency that collects local earned income and local services taxes.

### » Mont Alto Borough

Ronald G. Strit, Tax Collector  
317 Park Street  
Mont Alto, PA 17237  
717-749-7869

### » Waynesboro Borough

Kara Geesaman, Tax Collector  
15 E. Main Street  
Waynesboro, PA 17268  
717-765-9555

### » Quincy Township

Debbie J. Gift, Tax Collector  
PO Box 185  
Quincy, PA 17247

### » Washington Township

Donald L. Ambrose, Tax Collector  
13013 Welty Road  
Waynesboro, PA 17268  
717-762-1760



# Local Education

## PUBLIC SCHOOLS

Students residing in the greater Waynesboro area have access to a public education in the Waynesboro Area School District. The district educates more than 4,300 students in four elementary schools (K-5), a middle school (6-8), and one senior high school (9-12). Students study at Fairview Elementary, Hooverville Elementary, Mowrey Elementary, Summitview Elementary, Waynesboro Area Middle School, and Waynesboro Area Senior High School.

The school district offers a comprehensive curriculum to meet the needs of a diverse student population. English Language Arts (ELA), mathematics, science, social studies, world languages, health, art, music, and physical education represent the core K-12 curriculum. Outdoor learning experiences and field trips enhance the elementary program. Special education services are provided for eligible students. The academic year begins in mid August and ends in May.

### » Waynesboro Area School

#### District, Central Office

210 Clayton Avenue  
Waynesboro, PA 17268  
717-762-1191  
www.wasd.k12.pa.us

### » Waynesboro Area

#### Senior High School

550 East Second Street  
Waynesboro, PA 17268  
Phone: 717-762-1191, Ext. 1200  
Office Fax: 717-749-5164  
Guidance Fax: 717-762-3787  
Athletic Office: 717-762-1191 ext. 1220

### » Waynesboro Area

#### Middle School

702 East Second Street  
Waynesboro, PA 17268  
Phone: 717-762-1191, Ext. 1300  
Fax: 717-762-6566

### » Fairview Elementary School

220 Fairview Avenue  
Waynesboro, PA 17268  
Phone: 717-762-1191, Ext. 1400  
Fax: 717-762-3939

### » Hooverville Elementary School

10829 Buchanan Trail East  
Waynesboro, PA 17268  
Phone: 717-762-1191, Ext. 1500  
Fax: 717-762-4222

### » Mowrey Elementary School

7891 Tomstown Road  
Waynesboro, PA 17268  
Phone: 717-762-1191, Ext. 1600  
Fax: 717-749-5856

### » Summitview Elementary School

840 East Second Street  
Waynesboro, PA 17268  
Phone: 717-762-1191, Ext. 1800  
Fax: 717-762-3764





## PRIVATE SCHOOLS:

## SAINT ANDREW CATHOLIC SCHOOL

St. Andrew Catholic School, established in 1925, is located in the heart of historic downtown Waynesboro. For parents seeking a religious-based education, St. Andrew Catholic School is devoted to fostering Christian values and academic excellence in a nurturing environment by providing a quality faith-filled Catholic education by a highly qualified staff. All curriculum policies and procedures are established by the Office of Catholic Schools of the Diocese of Harrisburg and are voluntarily consistent with the requirements of the National Common Core Standards. While many schools have removed specialized academic courses, St. Andrew Catholic School continues to offer art, music, library, computer science, physical education, and Spanish.

St. Andrew Catholic School integrates the latest educational technologies in order to enhance the existing academic program. Students have access to a number of valuable resources at their fingertips including Chromebooks, Kindle Fires, iPads, and a fully equipped media lab. Teachers also use Mimio technology in the classroom.

In addition to a strong academic program, St. Andrew Catholic School students participate in wide array of after school clubs, activities, and community service opportunities. Students in grades four through eight can participate in band and piano instruction. Furthermore, students can be found planting, tending, and harvesting the school garden every fall and spring. Fresh produce is donated back to the community.

St. Andrew Catholic School is accredited by the Middle States Association of Colleges and Schools and the National Catholic Education Association.

» **Saint Andrew the Apostle  
Catholic School**  
Grades Pre-K–8

213 E. Main Street  
Waynesboro PA 17268  
717-762-3221  
[www.saintandrewschool.org](http://www.saintandrewschool.org)



## PRIVATE SCHOOLS:

## SHALOM CHRISTIAN ACADEMY

Shalom Christian Academy is a PreK through 12th grade school focused on developing lives of consequence in the world for the kingdom of God. From the moment your family chooses Shalom, you are part of our community. Our culture is based on individuals who come together each school year to support, encourage, and energize one another. Within the school setting we provide opportunities for students to develop relationships with teachers and each other. Teachers are a living curriculum, meaning they recognize students are impacted by actions more than words. Families form relationships that extend beyond the school. There is a sense of belonging as students learn together at Shalom. Our goal is to guide students in becoming lifelong learners who are able to engage the world. Students are prepared academically through a comprehensive curriculum that offers a variety of course options. Our living curriculum concept is vital as students form values, beliefs, and habits. Shalom Christian Academy serves more than 680 students in PreK through 12th grade on our 34 acre campus. Another 180 students are served through Growing Tree Preschool at our five satellite locations in Waynesboro, Chambersburg, and Greencastle. Shalom is accredited by the Middle States Association of Colleges and Schools (MSA) and the Association of Christian Schools International (ACSI). We are a member of the Mennonite Schools Council.

» **Shalom Christian Academy,**  
Grades PreK–12  
126 Social Island Road  
Chambersburg, PA 17202  
717-375-2223  
[www.shalomca.com](http://www.shalomca.com)  
[facebook.com/scaflames](https://facebook.com/scaflames)  
[instagram.com/scaflames](https://instagram.com/scaflames)

# Colleges & Universities

Residents living in the area have an exceptional selection of first-rate colleges and universities from which to choose to advance their educational or professional goals.

## PENN STATE MONT ALTO

Penn State Mont Alto is a small and inclusive community where students receive a world-class Penn State education in a personalized environment. Our academic offerings cover in-demand fields, including nursing, business, information technology, and project and supply chain management.

We work together to give back to the University, the communities we serve, and the world, whether that's through service-learning, community service, or our entrepreneurship innovation hub, the Mont Alto LaunchBox.

At the Mont Alto campus, students can complete one of eight bachelor's degrees and seven associate degrees or enroll in Penn State's 2+2 Plan that allows students to complete their first two years at the Mont Alto campus and then transition to another Penn State campus to complete one of 275+ Penn State majors.

Our 106-acre campus is in South Central Pennsylvania, which provides lots of opportunities for outdoor recreational activities including hiking, skiing, mountain biking, and kayaking. And we are positioned for easy access to Harrisburg, Washington D.C., Baltimore, and Philadelphia, so a day trip to the city is no more than three hours away.

Our students can be engaged campus citizens by getting involved in any of the 50+ student clubs and organizations on campus, including THON, the largest student-run philanthropy in the world, or playing on one of our four men's and five women's intercollegiate sports team. So, whether you live on campus or commute, you will find your place in our community.

### » Penn State Mont Alto

1 Campus Drive

Mont Alto, PA 17237

Admissions 717-749-6130 | Continuing Education 717-749-4118

montalto.psu.edu



**WELLSPAN**  
Well at Work

**Keeping your employees  
well at work.**

You can count on the experience and expertise of WellSpan as your **trusted healthcare partner.**

- ✓ Occupational Health
- ✓ Workforce Injury
- ✓ Onsite and near-site clinics
- ✓ Online Urgent Care
- ✓ Wellness Services
- ✓ Employee Assistance Program
- ✓ Telehealth & Digital Care
- ✓ Medical Benefits

Call us today to learn about our continuum of employer solutions.  
(888) 949-9882 | [wellatwork@wellspan.org](mailto:wellatwork@wellspan.org)  
[wellspan.org/wellatwork](https://www.wellspan.org/wellatwork)

ADAMS • CUMBERLAND • FRANKLIN  
LANCASTER • LEBANON • YORK



**COLDWELL BANKER**

**RESIDENTIAL BROKERAGE**

**717-762-7111**

1814 E. Main St. Waynesboro, PA

**PAUL GUNDER**  
Associate Broker, REALTOR®

Cell: 717-729-0200  
[paul.gunder@cbhomes.com](mailto:paul.gunder@cbhomes.com)  
[www.ListWithPaul.com](http://www.ListWithPaul.com)

**MATT GUNDER**  
REALTOR®

Direct: 717-765-2566  
Cell: 717-729-8027  
[matt.gunder@cbhomes.com](mailto:matt.gunder@cbhomes.com)  
[www.MattGunder.com](http://www.MattGunder.com)



# Business & Industry

## GROWING A VIBRANT BUSINESS COMMUNITY

The Greater Waynesboro Chamber of Commerce is committed to enhancing the greater Waynesboro area by fostering business success, building connections and providing resources for our members and community.

### >> Greater Waynesboro Chamber of Commerce

118 Walnut St., Suite 111  
Waynesboro, PA 17268  
717-762-7123  
[www.waynesboro.org](http://www.waynesboro.org)

## DOWNTOWN REVITALIZATION

Mainstreet Waynesboro Inc. is dedicated to restoring downtown Waynesboro to an attractive, commercial district. The organization sponsors several community events throughout the year, many of which attract residents and visitors to the downtown. Annual events include the Chocolate Extravaganza, Brewmaster Beer Festival, Market Day, Tree Lighting, and Holiday Parade.

### >> Mainstreet Waynesboro, Inc.

13 W. Main Street  
Waynesboro, PA 17268  
717-762-0397 | [www.mainstreetwaynesboro.org](http://www.mainstreetwaynesboro.org)



SGI

Mining minerals since 1923 in Blue Ridge Summit, PA, to manufacture innovative, sustainable products.

**Roofing Products**

SGI's solar reflective granules limit transmission of solar infrared radiation through shingles, reducing heat load to a building, and providing energy and cost savings.

**Building Materials**

SGI's high-quality, hard rock is certified in PA, MD, WV, and VA, and used in construction applications, including asphalt, concrete, and general site development. Use of SGI's recycled mined materials in concrete production shows potential to reduce the carbon footprint traditionally associated with the process.

**Agricultural Products**

SGI's soil amendments for agriculture replenish nutrient-depleted farmland, support healthy, robust yields, and capture atmospheric carbon.

From the roof to the road to the dinner table, our rocks improve lives.  
[www.specialtygranules.com](http://www.specialtygranules.com)

A standard INDUSTRIES COMPANY



## OUR BLEND OF INDUSTRY

The Waynesboro area's blend of agricultural, commercial, industrial, and professional businesses offers a unique atmosphere for a positive business climate and stable workforce. If you choose to locate your business here, you will find the area has a favorable tax climate and easy access to major highways. This makes the Waynesboro area an excellent location for commerce. The workforce includes small, independently-owned businesses to large companies with hundreds of employees. Banking, construction, education, farming, health care, manufacturing, and retailers are only a small sample of the businesses represented here.

### » Top Employers

WellSpan	3,175
Manitowoc Crane Group	1,250
Waynesboro Area School District	556
Johnson Controls/Frick Company	460
DL George & Sons	300
TE Connectivity	235

Source: Franklin County Area Development Corp. 2020 County Profile

## WAYNESBORO INDUSTRIAL DEVELOPMENT CORP.

The Waynesboro Industrial Development Corporation (WIDC) is a 501(C)6 non-profit corporation that strives to develop, own, lease, and improve property that can be used for the advancement of commercial, industrial, and civic purposes with the goal of promoting, stimulating, and revitalizing commerce, industry, and manufacturing in the greater Waynesboro community.

WIDC is managed by a 13-member volunteer Board of Directors. The Corporation recently completed with development of the 121 acre Wharf Road Industrial Park in Zullinger, Washington Township. The Park features seven companies who collectively employ more than 300 workers. For more information on WIDC contact 717-762-7123 or visit [waynesboro.org/widc](http://waynesboro.org/widc).



<b>HOLIDAY PARADE &amp; ACTIVITIES</b>  NOV.-DEC. 2022	<b>BORO BLAST</b> 5 to 7:30 PM Main Street Park DEC. 31, 2022	<b>Waynesboro's BEER &amp; WINE &amp; CIDER Festival</b> MAY 20, 2023	<b>Saturdays 8:30 to NOON</b> <b>WAYNESBORO'S FARMERS MARKET</b> MAY 27 TO SEPT. 23, 2023	 <b>Mainstreet Waynesboro, Inc.</b> 13 West Main Street Waynesboro, PA 17268 717-762-0397 Bill@waynesboro.org MainstreetWaynesboro.org  "...bringing hometown back to downtown"  Follow us on Facebook and Instagram! 
<div><b>To downtown Waynesboro... good things are happening in our community!</b></div>				
<b>JUNE 17, 2023</b> <b>FATHER'S DAY CAR &amp; TRUCK SHOW</b>  9 AM-2 PM	<b>2nd SATURDAYS JUNE-SEPT.</b> <b>SUMMER CONCERT SERIES</b>  Main Street Park	<b>AUG. 4-5, 2023</b> <b>HP WAYNESBORO WIZARDING WEEKEND DOWNTOWN</b> 	<b>OCTOBER 7, 2023</b> <b>MARKET DAY</b> 9 AM-4 PM 	

## FRANKLIN COUNTY AREA DEVELOPMENT CORP.

Franklin County Area Development Corp. (FCADC) is a 501(c)(6) nonprofit that works to create a countywide atmosphere that nourishes planned growth and family-sustainable employment opportunities. This is achieved with strategies that focus on retention and expansion of existing employers, the selective attraction of new businesses, and assisting the start-up of new businesses.

Created in 1960, FCADC, since 1986, has facilitated more than 800 successful projects in Franklin County resulting in more than \$2.8 billion in capital expenditures, and creating and retaining more than 55,000 jobs.

### » Franklin County Area Development Corp.

1900 Wayne Road  
Chambersburg, PA 17202  
717-263-8282 | [www.fcadc.com](http://www.fcadc.com)





# MUSSELMAN & CREAGER, LLP

CERTIFIED PUBLIC ACCOUNTANTS

» Accounting and Auditing

» Business and Personal Tax Preparation

» Bookkeeping

» Payroll Services

(717)-762-0331

53 N. Broad St., Waynesboro PA

[www.musselmanandcreager.com](http://www.musselmanandcreager.com)

## WE MAKE A BIG DEAL OUT OF SMALL BUSINESS.

**Get Financing to Help Your Business Grow.**

Whether you need new equipment, working capital, or new commercial property, turn to the lender that's committed to your success. We provide businesses with the right financing solutions at competitive rates.



**Brittany Leppert**  
[bleppert@patriotfcu.org](mailto:bleppert@patriotfcu.org)  
240-850-7014

Commercial Real Estate Loans

Equipment Loans

Business Lines of Credit

Business Vehicle Loans

Visa® Business Credit Cards

And More



[patriotfcu.org](http://patriotfcu.org)  
INSURED BY NCUA

**Patriot**  
FEDERAL CREDIT UNION

## LOCAL AGRIBUSINESS SPOTLIGHT:

# Sugar Hollow Farm Alpacas

Greeted by a herd of Huacaya alpacas, Sugar Hollow Farm Alpacas has a friendly and unique welcoming party that makes guests feel like part of the family. Co-owners, Jay Brown and wife Kathy, are delighted to share their story about how the farm came to be one big happy family. "It all started in 2008 at a late summer fair in Lucketts, Virginia," Jay begins. As the story goes, they stopped by the yarn vendor because Kathy loves to knit. This particular woman sold beautiful, soft, 'and totally irresistible alpaca yarn,' as Kathy puts it. They admired photos of the cute crias (baby alpacas) that had been born two weeks earlier, and learned alpacas are one of the easiest livestock to care for. Jay fondly recollects, "Without realizing it, we had found our retirement plan!"

Sugar Hollow Farm Alpacas is open to the public and encourages school groups to visit. Come learn more about these beautiful smart mammals that do not have top teeth, can eat two pounds of grass a day, hum to communicate, have distinct personalities, and the softest fleece.

» **Sugar Hollow Farm Alpacas**  
9955 Masters Road  
Waynesboro, PA 17268  
717-749-7056 | [www.shfalpacas.com](http://www.shfalpacas.com)





LOCAL AGRIBUSINESS SPOTLIGHT:

Ivy Hill Farm



Fresh is what it's all about at Ivy Hill Farm – which has been in the Martin family for seven generations and continues today under the ownership of John (Steven) and Karen Martin. A pledge to carry on the tradition of growing quality fruits, vegetables, and livestock on the 150-acre farm once known as “Hospitality,” here you'll find everything from fruits and vegetables, herbs and bedding plants, to hanging baskets and other garden items. The retail store shelves specialty items such as nuts, jams, jellies and their very own home-made pressed cider. Ivy Hill Farm is about family and they welcome yours to one of their many events throughout the year: Farm Festival and Blessings of the Crops, Cider Press Party, Annual Apple Dessert Bake Off, and Christmas on the Farm. Nestled in the livestock barns you will find their Yorkshire hogs and chickens. Don't forget to check out “Harold” the unofficial trade mark known to all who visit the farm.

» Ivy Hill Farm  
13840 Smithsburg Pike  
Smithsburg, MD 21783  
301-824-4658 | ivy-hill-farm.com







**L.T. Rush**  
HEARTH & HOME

[ltrushstone.com](http://ltrushstone.com) | (717) 765-6941



**BELL**  
INSURANCE

Quality Insurance Products | Competitive Prices | Personalized Customer Service

*Proud to be South Central Pennsylvania's one-stop shop for personal and commercial insurance since 1987.*

**Our Products**

- Auto & Homeowners
- Commercial Insurance
- Workers' Compensation
- Employment Practices Liability
- Bonds / Surety
- Farm Insurance

- Group Health
- Disability (Group & Individual)
- Life
- Long-Term Care
- Medicare Supplement
- Voluntary Products

Connect with us  

[www.BellInsuranceInc.com](http://www.BellInsuranceInc.com)

© Copyright Bell Insurance, Inc. 2020. All Rights Reserved.



**Grove-Bowersox**  
FUNERAL HOME, INC.

**Cumberland Valley Crematorium**

50 S. Broad St., Waynesboro, PA 17268  
Phone: (717) 762-2811  
[www.bowersoxfuneralhomes.com](http://www.bowersoxfuneralhomes.com)



**JEREMY A. BOWERSOX**  
Supervisor/Owner



## Websites of Interest

- 
- » **Borough of Waynesboro**  
[www.waynesboropa.org](http://www.waynesboropa.org)
  - » **Bureau of Consumer Protection**  
[www.attorneygeneral.gov](http://www.attorneygeneral.gov)
  - » **Center for Entrepreneurial Assistance**  
[www.pabizonline.com](http://www.pabizonline.com)
  - » **Franklin County Area Development**  
[www.fcadc.com](http://www.fcadc.com)
  - » **Franklin County, PA**  
[www.co.franklin.pa.us](http://www.co.franklin.pa.us)
  - » **Franklin County Visitors Bureau**  
[explorefranklincountypa.com](http://explorefranklincountypa.com)
  - » **Greater Waynesboro Chamber of Commerce**  
[www.waynesboro.org](http://www.waynesboro.org)
  - » **Letterkenny Army Depot**  
[www.letterkenny.army.mil](http://www.letterkenny.army.mil)
  - » **Mainstreet Waynesboro**  
[www.mainstreetwaynesboro.org](http://www.mainstreetwaynesboro.org)
  - » **PA Chamber of Business and Industry**  
[www.pachamber.org](http://www.pachamber.org)
  - » **PA Department of Agriculture**  
[www.agriculture.pa.gov](http://www.agriculture.pa.gov)
  - » **PA Department of Education**  
[www.pde.state.pa.us](http://www.pde.state.pa.us)
  - » **PA Department of Labor and Industry**  
[www.dli.state.pa.us](http://www.dli.state.pa.us)
  - » **PA Department of Revenue**  
[www.revenue.pa.gov](http://www.revenue.pa.gov)
  - » **PA Department of Transportation**  
[www.penndot.gov](http://www.penndot.gov)
  - » **Small Business Administration**  
[www.sba.gov](http://www.sba.gov)
  - » **Small Business Development Center**  
[www.ship.edu/sbdc](http://www.ship.edu/sbdc)
  - » **State of Pennsylvania**  
[www.state.pa.us](http://www.state.pa.us)
  - » **U.S. Census Data**  
[www.census.gov](http://www.census.gov)
  - » **WellSpan Waynesboro Hospital**  
[www.wellspan.org](http://www.wellspan.org)
  - » **Waynesboro Area School District**  
[www.wasd.k12.pa.us](http://www.wasd.k12.pa.us)

» Arendtsville.....	17303	» Orbisonia.....	17249
» Blue Ridge Summit.....	17214	» Orrstown.....	17244
» Burnt Cabins.....	17215	» Orrtanna.....	17353
» Cashtown.....	17310	» Plainfield.....	17081
» Chambersburg.....	17201, 17202	» Pleasant Hall.....	17246
» Doylesburg.....	17219	» Quincy.....	17247
» Dry Run.....	17220	» St. Thomas.....	17252
» Fairfield.....	17320	» Scotland.....	17254
» Fannettsburg.....	17221	» Shade Gap.....	17255
» Fayetteville.....	17222	» Shady Grove.....	17256
» Fort Loudon.....	17224	» Shippensburg.....	17257
» Greencastle.....	17225	» South Mountain.....	17261
» Lemasters.....	17231	» Spring Run.....	17262
» Lurgan.....	17232	» State Line.....	17263
» Marion.....	17235	» Walnut Bottom.....	17266
» McConnellsburg.....	17233	» Waynesboro.....	17268
» Mercersburg.....	17236	» Willow Hill.....	17271
» Mont Alto.....	17237	» Zullinger.....	17272
» Newburg.....	17240		

717-762-7123 | waynesboro.org | 41

# Living Well

## LOCAL HEALTHCARE SPOTLIGHT:

### WellSpan Waynesboro



*In 2022 WellSpan Waynesboro Hospital celebrated 100 years of providing quality patient care to our community.*

Integrity. Compassion. Excellence. Service. WellSpan Waynesboro Hospital's team of dedicated hospitalists, surgeons, nurses, and administrative staff are guided by these four core values as they make decisions in the interest of providing high-quality patient care. That's why it's no surprise the hospital leads the region in patient satisfaction scores.

Established in 1922 by a group of community volunteers in response to the Spanish Influenza, WellSpan Waynesboro Hospital over the years has continued to grow to better serve the people of Waynesboro and the surrounding communities. The hospital offers a full range of medical services, including award-winning stroke care, diagnostic lab and imaging services, emergency care, a wound care center, and comfortable patient rooms in a warm and healing environment.

Adjacent to the hospital is the WellSpan Waynesboro Medical Office Building, which offers a variety of primary and specialty outpatient practices for expert care close to where patients live and work. Services include urgent care, family and internal medicine, women's care, breast care, oncology, endocrinology, ENT and hearing, orthopedics, podiatry, and urology.

#### » WellSpan Waynesboro Hospital

501 E. Main Street  
Waynesboro, PA 17268  
717-765-4000  
[www.wellspan.org](http://www.wellspan.org)



**ANTI-TAM PHARMACY**

Your Independent Leader Pharmacy

Online Prescription Refills 24/7  
Delivery Service Available!

Hours: Mon.-Fri: 9 a.m.-5:30 p.m.  
Sat.: 9 a.m.-2 p.m.; Closed Sun.  
David Riley, R. Ph.

730 S. Potomac St., Waynesboro, PA | (717) 762-1164  
[www.anti-tampharmacy.com](http://www.anti-tampharmacy.com)



**Contact us  
today for an  
insurance  
quote.**

239 E Main St  
Waynesboro, PA 17268  
717-762-3147  
[www.blueridgeriskpartners.com](http://www.blueridgeriskpartners.com)



Move forward with confidence.

## OASIS SENIOR ADVISORS

We make senior living simple. Finding and understanding senior living options can be overwhelming and confusing. Oasis Senior Advisors is here to help you. We assist seniors and families to find the solution and senior living option that is the right fit. We will be with you every step of the way to make the process simple and easy. Best of all, there is never a cost for our services.

#### » Oasis Senior Advisors

32 Ashley Way  
Myersville, MD 21773  
240-866-0064 | [www.oasisseioradvisors.com](http://www.oasisseioradvisors.com)



## LOCAL HEALTHCARE SPOTLIGHT:

# Keystone Health

Keystone Health was founded in 1986 by President and Chief Executive Officer Joanne Cochran to provide quality, seasonal health care to migrant farmworkers in Franklin County. At its inception, Keystone Health was operated by three volunteers who saw 500 patients during the first season. Today, Keystone Health is staffed by a diverse team of professionals who annually care for over 56,000 people. Services include family medicine, behavioral health, dental, pediatrics, internal medicine, women's care, urgent care, audiology, pediatric, occupational and speech therapy and more.

## » Keystone Health

111 Chambers Hill Drive, Suite 200  
Chambersburg, PA 17201  
717-709-7900  
[www.keystonehealth.org](http://www.keystonehealth.org)

## Keystone Pediatrics Waynesboro



Dr. Allison  
Hickman

Dr. Arnould  
Oreste

Dr. Bethany  
Garnand

**Accepting New Patients! (717) 387-8060**

45 Roadside Avenue, Waynesboro

## Retirement Living

Movoto Real Estate blog ranked Waynesboro second on a list of the 10 Best Places to Retire in Pennsylvania. Waynesboro was selected from among 68 towns across the Commonwealth with a population of more than 10,000 based on cost of living, crime rate, amenities per person, weather, and distance to the nearest international airport. Whether you prefer to live in a planned community or you need assisted living care, several exceptional options are available.

### THE LELAND OF LAUREL RUN

Located in historic Waynesboro, The Leland of Laurel Run is a privately owned Personal Care residence.

The Leland of Laurel Run offers its residents security, trust, and a sense of belonging while giving seniors who live there the option of independence when they want it and assistance if they need it. In 2014, the home opened a Memory Care unit designed to give residents with dementia a safe, therapeutic, home-like environment where they can still make choices and celebrate accomplishments.

#### » The Leland of Laurel Run

120 W. Main Street  
Waynesboro, PA 17268  
717-749-0083  
[www.lelandpersonalcare.com](http://www.lelandpersonalcare.com)

CALL TODAY FOR A PERSONAL TOUR 717-762-6313

**HEARTHSTONE**  
RETIREMENT HOME  
& IN-HOME CARE SERVICES



We are located in a residential neighborhood in the heart of Waynesboro, PA in the beautiful Cumberland Valley, an area rich in agriculture and history. We are within a few blocks of several churches, hair stylists, stores, and the library.

102 South Potomac Street Waynesboro, PA 17268 | [www.hearthstoneretirementhome.org](http://www.hearthstoneretirementhome.org)

## HEARTHSTONE RETIREMENT HOME AND IN-HOME CARE SERVICES

Hearthstone Retirement Home is a private, not-for-profit, independent facility. We are a 30-bed, Licensed Personal Care Home located in a residential neighborhood in the heart of Waynesboro, PA. Residents thrive in a secure environment with 24-hour staff assistance, plus a registered nurse on-site.

Hearthstone In-Home Care Services is a private, not-for-profit program. We offer non-medical care options such as dressing, bathing, toileting, medication reminders, housekeeping, assistance with ambulation, activities and food preparation. We offer up to 24-hours of care in your own home.

### » Hearthstone Retirement Home and In-Home Care Services

102 S Potomac Street  
Waynesboro, PA 17268  
HRH: 717-762-6313 | HIHC: 717-749-7279 | FAX: 717-765-9414  
[www.hearthstoneretirementhome.org](http://www.hearthstoneretirementhome.org)

## ELEVATION HEALTHCARE

At Elevation Healthcare our main goal is to help you become successful at improving your health. We realize your health is important to you and wanted to offer a place where you can combine all your care needs. Our programs have been developed by our providers to help you improve your health needs. We specialize in women services, medically supervised weight loss programs, wellness programs and full lab services.

### » Elevation Healthcare

1647 East Main Street, Waynesboro, PA 17268  
717-628-3699 | [info@elevationwell.com](mailto:info@elevationwell.com)

## QUINCY VILLAGE

Part of Presbyterian Senior Living, Quincy Village is a not-for-profit Life Plan Community located on a 360-acre campus. Quincy Village offers independent living in cottages and apartments; assisted living and personal care; specialized skilled nursing; rehabilitation and dementia care.

### » Quincy Village

6596 Orphanage Road, Waynesboro, PA 17268  
717-749-2300 | [www.quincylvillage.org](http://www.quincylvillage.org)

## Living Better, Growing Together



PRESBYTERIAN  
**SENIOR LIVING**  
Quincy Village

**717.296.2211**  
[qvliving@psl.org](mailto:qvliving@psl.org)

[www.psl.org/quincy](http://www.psl.org/quincy) | Waynesboro, PA



**COVENANT**  
FAMILY DENTISTRY

**717-762-1515**

750 S Potomac Street | Waynesboro, PA 17268 | [covenantfamilydentistry.com](http://covenantfamilydentistry.com)



## VISITING ANGELS

Visiting Angels provides non-medical, in-home care to seniors in the comfort of their own home. We offer such services as meal preparation, light housekeeping, bathing and dressing assistance, medication reminders, assistance with walking, running errands and shopping, and respite care for families. We offer flexible hourly care, up to 24 hours a day.

When you choose Visiting Angels as your home care provider, they begin by reviewing your loved one's needs. They meet with involved family members and, when necessary, consult with the physician(s) of the care recipient, social workers, hospitals, or nursing home staff. Their goal is to get a complete picture of your loved one's in-home care needs.

### » Visiting Angels

10764 Buchanan Trail East  
Waynesboro, PA 17268  
717-749-0458 | [www.visitingangels.com/waynesboro](http://www.visitingangels.com/waynesboro)

## WAYNESBORO PHYSICAL THERAPY & SPORTS MEDICINE

Waynesboro Physical Therapy & Sports Medicine is a physical therapist owned, private practice located Waynesboro. The staff are dedicated to providing the local community with the highest level of care possible in a compassionate and relaxed environment. Their practice patterns are founded on the most current research with a concentration on exercise and manual techniques to help their clients regain their health, mobility, function and overall wellness.

### » Waynesboro Physical Therapy & Sports Medicine

118 Walnut St # 114  
Waynesboro, PA 17268  
717-655-5681 | [www.waynesboropt.com](http://www.waynesboropt.com)

**Need Physical Therapy?**  
Specifically ask for the only  
**LOCALLY OWNED option.**



*Friendly Faces, Excellent Outcomes | Free Consultations  
Comprehensive Outpatient Physical Therapy Services*

**717-655-5681 • [www.WaynesboroPT.com](http://www.WaynesboroPT.com)**

118 Walnut St., Unit 114 • Waynesboro, PA

**America's Choice In Homecare.®**  
Experienced Senior Care For Total Piece of Mind.

**Waynesboro Office**  
10764 Buchanan Trail East  
Waynesboro, PA 17268  
**717-749-0458**  
[VisitingAngels.com/Waynesboro](http://VisitingAngels.com/Waynesboro)  
PA Lic. 22553601

**Hagerstown Office**  
19833 Leitersburg Pike, Suite 8  
Hagerstown, MD 21742  
**301-790-0248**  
[VisitingAngels.com/Hagerstown](http://VisitingAngels.com/Hagerstown)  
MD Lic. 130906

Each Visiting Angels agency is independently owned and operated.

**We Provide Services to 7,000 People in the Four State Area by Removing Barriers to Employment and Creating Opportunities for Success.**

**Your Donations & Purchases Help Pay for those services**

**More than a store**  
Horizon Goodwill Industries  
[www.horizongoodwill.org](http://www.horizongoodwill.org)



# Keeping the Faith

Regardless of where you are in your spiritual journey, the greater Waynesboro area is host to numerous churches ready to welcome you into their faith families.

About 400 churches call Franklin County home and the greater Waynesboro area has the highest concentration with 60 congregations represented. A variety of denominations are represented here and congregations come in all sizes. Many offer online live and pre-recorded services as well. Check out the individual webpage for more information.



Photo © John Briggs



**OTTERBEIN**  
CHURCHWAYNESBORO

**A Great Place  
to Connect with  
God & Others**

912 S. Potomac Street • Waynesboro, PA 17268 • 717.762.7147  
[otterbeinchurch.org](http://otterbeinchurch.org) • [facebook.com/otterbeinchurch](https://facebook.com/otterbeinchurch)

- choice of service times -
- children's ministries -
- youth ministries -
- practical Bible teaching -
- contemporary worship -
- local2global ministries -
- nondenominational -

45 Walnut St.  
Waynesboro, PA 17268  
(717)-765-8515  
(717)-765-4671 (fax)  
107 East Baltimore St.  
Greencastle, PA 17225  
(717)-597-1995

**Charles L. Strausbaugh**  
**CPA**  
 CERTIFIED PUBLIC ACCOUNTANTS

[charlesstrausbaughcpa.com](http://charlesstrausbaughcpa.com)  
 Email: [cstrausbaugh@clscpape.com](mailto:cstrausbaugh@clscpape.com)

Providing professional service with  
a personal touch, because our clients  
are more than just numbers.

**STAYING ON TRACK.**

**STERLING**  
Financial Management, Inc.

We are a client-focused firm offering retirement preparation, investment management, financial services, education planning and more!

1825 Howell Rd, Ste 5 Hagerstown, MD 21740    [www.sterlingfm.com](http://www.sterlingfm.com)

Securities and advisory services offered through LPL Financial,  
a registered investment advisor, member FINRA/SIPC.



# Church Locations

# & Service Hours

» **Calvary Assembly of God, Inc.**  
P 717-762-5432  
116 Snider Avenue  
Waynesboro, PA 17268  
[www.discovercalvary.net](http://www.discovercalvary.net)  
**SERVICE TIMES**  
Sundays 8AM Traditional and 10:30AM Contemporary, 5PM Youth Service, Wednesdays 6:30PM Family Night

» **Christ United Methodist Church**  
P 717-762-7011  
100 S. Church Street  
Waynesboro, PA 17268  
[www.umchrist.org](http://www.umchrist.org)  
**SERVICE TIMES**  
Sundays 8:15AM and 10:45AM, Sunday School 9:30AM

» **Evangelical Lutheran Church**  
P 717-762-9151  
43 S. Church Street  
Waynesboro, PA 17268  
[www.elchome.org](http://www.elchome.org)  
**SERVICE TIMES**  
Sundays 8AM Traditional and 10:45AM Celebration Worship Service

» **Five Forks BIC Church**  
P 717-762-2991  
9244 Five Forks Road  
Waynesboro, PA 17268  
[www.ffbic.org](http://www.ffbic.org)  
**SERVICE TIMES**  
Sundays 8AM, 9:45AM Sermon lab 11AM

» **Hawley Memorial Presbyterian Church**  
P 717-794-2637  
14753 Charmian Road  
Blue Ridge Summit, PA 17214  
[cbatzelhawleych@gmail.com](mailto:cbatzelhawleych@gmail.com)  
[www.hawleymemorial.com](http://www.hawleymemorial.com)  
**SERVICE TIMES**  
Sunday School 9:30AM  
Sunday Worship 11AM

» **Otterbein Church & Ministry Center**  
P 717-762-7147  
912 South Potomac Street  
Waynesboro, PA 17268  
[www.otterbeinchurch.org](http://www.otterbeinchurch.org)  
**SERVICE TIMES**  
Sundays 8AM, 9:30AM, 11AM

» **Restoration Church of God**  
P 717-655-5783  
66 West Main Street  
Waynesboro, PA 17268  
[www.restorationcogic.org](http://www.restorationcogic.org)  
**SERVICE TIMES**  
Sundays 11:00AM

» **St. Andrew the Apostle Roman Catholic Church**  
P 717-762-1914  
12 N Broad Street  
Waynesboro, PA 17268  
[www.standrewwbo.org](http://www.standrewwbo.org)  
**SERVICE TIMES**  
Daily Mass 8AM  
Vigil Mass Saturdays 5PM  
Sundays 8AM and 11AM

» **St. Mary's Episcopal Church**  
P 717-762-1930  
112 E. Second Street  
Waynesboro, PA 17268  
[stmaryswayneboro.kiocpa.org](http://stmaryswayneboro.kiocpa.org)  
**SERVICE TIMES**  
Sundays 8AM and 10:30AM, Wednesdays 7:30PM

» **Trinity United Church of Christ**  
P 717-762-7191  
30 W. North Street  
Waynesboro, PA 17268  
[www.tuccwboro.com](http://www.tuccwboro.com)  
**SERVICE TIMES**  
Sundays 9AM and 10:45AM Sanctuary Worship



# The Great Outdoors

## LOCAL PARKS AND RECREATION

There are several municipal parks and recreation areas located in the greater Waynesboro area. For full details on specific parks or areas, please refer to information from the municipality in whose jurisdiction they are located.

### *Happel's Meadow Wetlands*

**LOCATION:** Along PA Route-16, six miles east of Waynesboro

**FEATURES:** Happel's Meadow is a 78-acre unique upland wetlands that is being preserved in perpetuity by Washington Township.

### *Heritage Park in Quincy*

**LOCATION:** 7575 Mentzer Gap Road right next to the Quincy Township offices

**FEATURES:** Heritage Park is a place where you and your family are able to enjoy the great outdoors. Walk nearly a mile of wooded trails, use the exercise trail and fitness track or sit and enjoy the serene area on one of the benches to listen and watch the wildlife. Available for use is a baseball field and concession stand, along with handicapped accessible restrooms. A Friend of the Quincy Heritage Park sponsorships can be obtained at Quincy Township office with the Park Committee.

### *Memorial Park in Waynesboro*

**LOCATION:** Between Clayton Avenue and Walnut Street, east of E. Fifth Street

**FEATURES:** Little League, softball, and baseball fields; four tennis courts; three play areas; small pavilion; basketball court; volleyball court; pickleball court; walking trail (.42 miles) and memorial wall dedicated to locals who have served the country in war.

### *Mont Alto Recreation Area*

**LOCATION:** Mont Alto Borough at Spruce Street

**FEATURES:** Two playground areas; two pavilions — one with and one without electric; lighted, shaded, paved walking path; sand volleyball court; and war memorial. Note: Park closed from mid-November through the end of March each year, meaning facilities are not available and pathways are not maintained



## Monterey Pass Battlefield Park & Museum

Open April–November  
Saturday and Sundays 10am–4pm

14325 Buchanan Trail East, Waynesboro, PA 17268  
[www.montereypassbattlefield.org](http://www.montereypassbattlefield.org)  
[montereypassbattlefield@gmail.com](mailto:montereypassbattlefield@gmail.com)

WALKING TRAILS  
OVERLOOK // MUSEUM  
TENT CAMPING  
PLAYGROUND

### *Monterey Pass Battlefield Park & Museum*

**LOCATION:** 14325 Buchanan Trail East

**FEATURES:** The Monterey Pass Battlefield Park is a 125 acre natural, cultural & historical park. It is located in Washington Township, Franklin County, Pennsylvania and preserves a small portion of Pennsylvania's second largest Civil War battle. The history of the area dates back to 1747, when immigrants looking for a new life traveled through the area to Appalachia on the Great Wagon Road. This park is open April to November each year and hosts various live entertainment at their pavilion events. Visitors can take a living history tour, learn about Civil War gardening, schedule a ghost tour and view the relics display. Self driving and walking tours are available. Be sure to schedule your visit with the park and a staff member will drive your party on the 6 person golf cart up to the overlook if you are unable to hike it.

### *Northside Dog Park*

**LOCATION:** Behind Northside Pool

**FEATURES:** Two fenced, off-leash areas for dogs based on size. Dogs must be spayed or neutered; may not be aggressive or under four months; must be licensed; and must be registered with the borough.

### *Northside Pool*

**LOCATION:** 138 Brown Street

**FEATURES:** Zero-depth entrance; two slides; bubblers and other water features; concession stand; and kiddie pool. Memberships may be purchased from Waynesboro Borough and the pool may be rented for special events.



## Otterbein Church Community Park

**LOCATION:** 13375 Welty Road, Waynesboro, PA 17268

**FEATURES:** The Otterbein Community Recreation Park includes a pavilion, playground area for children, walking/running trail, softball field, pony league baseball field, and football/soccer field. There is a community center for indoor walking M-F 7:45-9:45. For rentals contact otterbeinchurch.org.

## Pine Hill Recreation Area

**LOCATION:** Washington Township

**FEATURES:** Three pavilions; one gazebo; two mini pavilions; restrooms; pony league baseball field; Little League/softball field; soccer field; two playgrounds; horseshoe pits; walking trails; sand volleyball court; and Dunlap Family Skate Park.

## Red Run Park

**LOCATION:** 12143 Buchanan Trail East, Waynesboro, PA 17268

**FEATURES:** Man-made lake; two playgrounds; restrooms; concession stand; five picnic pavilions; Red Run Express miniature train for children; 9/11 Tribute; music pavilion featuring live country, blue grass, and gospel concerts Sunday afternoons from the beginning of June through the end of September.

## The Institute

**LOCATION:** Postal address: P.O. Box 971, Waynesboro, PA 17268

717-762-0373 | [natureandcultureinstitute.org](http://natureandcultureinstitute.org) | [info@natureandcultureinstitute.org](mailto:info@natureandcultureinstitute.org)

**FEATURES:** Founded in 1990, The Institute provides curriculum-based environmental education and cultural history programs to thousands of school students annually. Community Learning programs and field trips for people of all ages are also offered, covering a broad range of topics.

The Institute continues to serve the Cumberland Valley region offering programs at Pine Hill Recreation Area, Happel's Meadow, Antietam Meadow Park, Red Run Park, and other satellite locations.

Thousands attend The Institute's annual events—Kite Fly, Shakespeare in the Park, Winter Solstice Celebration, Youth, Jazz, and Earth Day festivals, along with fundraisers like the Recycle Reuse Yard Sale, Bay Supper, Salamander Scramble 5K and the Pumpkins and Pippins Festival.

The Institute also supports citizen scientist activities such as stream monitoring, and offers high school and university student internships.

## Renfrew Museum and Park

**LOCATION:** 1010 East Main Street, Waynesboro, PA 17268

**FEATURES:** "Walk back in time" to a 200-year-old Pennsylvania German Farmstead situated on 107 scenic acres. Tour the restored Museum House, beautifully appointed with early furniture and decorative arts. Visitors Center houses largest collection of John Bell Family pottery on public display with original molds, plus exhibits of Franklin County longrifles and antique tradesmen's tools. Explore the grounds; discover more historic buildings, period gardens, and breathtaking vistas. Park offers 23 walking trails and picnic area. Annual signature events: Opening Day, Farmstead Days, Oktoberfest, and Christmas on the Farm. Regular programming includes summer concert series, tours, historic demonstrations, workshops, presentations, and more!

## Rolando Woods Park

**LOCATION:** 9 Charmain Road, Waynesboro, PA 17268

**FEATURES:** Recreational park in the heart of Monterey Pass Battlefield featuring a playground, spring house, and pavilion.

## Rotary Park

**LOCATION:** Intersection of West Ninth Street and Anthony Avenue

**FEATURES:** Fitness trail, pavilion, basketball court, and restrooms. Rotary Park was created and funded by the Rotary Club of Waynesboro.





## PENNSYLVANIA STATE PARKS

The greater Waynesboro area and its neighboring communities offer outdoor enthusiasts a multitude of scenic recreational opportunities. For more information, find the parks at: [www.dcnr.state.pa.us](http://www.dcnr.state.pa.us).

### Appalachian Trail



During warmer summer months, it's not uncommon to spot a hiker in rugged boots and an oversized backpack who has traveled into town to restock supplies or recharge. The greater Waynesboro area is just off the beaten path of the Appalachian Trail, making it convenient for residents and visitors to enjoy an afternoon or several days hiking through mountainous terrain with great views.

### Buchanan's Birthplace State Park



Found off of PA Route 16 in a gap of the Tuscarora Mountain range, Buchanan's Birthplace State Park pays homage to the 15th president of the United States (1857-1861), James Buchanan. The park offers two picnic pavilions, picnic tables, restrooms and drinking water in addition to the president's memorial.

### Caledonia State Park



Located along U.S. 30 between Chambersburg and Gettysburg, Caledonia State Park offers 1,125 acres natural landscape and trails accented by camping and picnicking facilities as well as a pool. The park is ideal for fishing and hiking. The park also is host to an 18-hole par 68 golf course, the Cathedral in the Pines, and the Totem Pole Playhouse.

### Cowans Gap State Park



A 1,085-acre park in neighboring Fulton County, one of this park's main attractions is a 42-acre lake surrounded by a 500-foot sand beach. The lake is a popular spot for swimming and boating in warmer seasons and ice skating or ice fishing during the winter. Additionally, the park offers several picnic pavilions; 630-acre hunting and camping sites.

### Michaux State Forest



Named for French botanist Andre Michaux, who discovered and named numerous plants during the 18th century, Michaux State Forest covers more than 85,500 acres in the South Mountain area of Adams, Cumberland, and Franklin counties.

### Mont Alto State Park



One of the oldest parks in the state park system, Mont Alto State Park is recognized for its unique bell-shaped pavilion. The park offers two picnic areas with tables and two pavilions, mountain roads appropriate for short hikes, and trout fishing. During the winter, those who snowmobile can enjoy the convenience of restrooms, parking, a loading/unloading ramp, and access to snowmobile trails at neighboring Michaux State Forest. Trails are open in late December after deer season has ended.

### Pen Mar Park



Located just over the Mason Dixon Line in neighboring Cascade, MD, at an altitude of 1,400 feet, Pen Mar Park gives visitors one of the best sprawling views of the greater Waynesboro area available. The park is a popular destination for people who enjoy dancing to the sounds of big bands. Live bands play as part of the Pen Mar Park Music Series from June through September. The park also offers a playground, picnic tables, and pavilions.





## AREA PARK LOCATIONS/CONTACTS

- » **Antietam Meadow Park**  
11881 Rinehart Drive  
Waynesboro, PA 17268  
[www.washtwp-franklin.org/parks-recreation](http://www.washtwp-franklin.org/parks-recreation)
- » **Happel's Meadow Wetland Preserve**  
Along PA Route 16  
[www.washtwp-franklin.org/parks-recreation](http://www.washtwp-franklin.org/parks-recreation)
- » **Heritage Park at Quincy**  
7575 Mentzer Gap Road  
Waynesboro, PA 17268  
[www.quincytwp.org](http://www.quincytwp.org)
- » **Mont Alto Recreation Area**  
Between Constitution Avenue and Spruce Street  
Mont Alto, PA 17237  
717-749-5808
- » **Monterey Pass Battlefield Park and Museum**  
14325 Buchanan Trail East  
Waynesboro, PA 17268  
[montereypassbattlefield@gmail.com](mailto:montereypassbattlefield@gmail.com)  
[www.montereypassbattlefield.org](http://www.montereypassbattlefield.org)
- » **Northside Park Pool**  
138 Brown Street  
Waynesboro, PA 17268  
717-762-7928  
[www.waynesboropa.org/northside-pool](http://www.waynesboropa.org/northside-pool)
- » **Otterbein Church Community Park**  
13375 Welty Road  
Waynesboro, PA 17268  
717-762-7147  
[www.otterbeinchurch.org](http://www.otterbeinchurch.org)
- » **Pine Hill Recreation Area**  
12684 Mentzer Gap Road  
Waynesboro, PA 17268  
717-762-3128  
[www.washtwp-franklin.org](http://www.washtwp-franklin.org)
- » **Red Run Park**  
12143 Buchanan Trail East  
Waynesboro, PA 17268  
717-762-3128  
[www.washtwp-franklin.org/parks-recreation](http://www.washtwp-franklin.org/parks-recreation)
- » **The Institute**  
P.O. Box 971  
Waynesboro, PA 17268  
717-762-0373  
[www.natureandcultureinstitute.org](http://www.natureandcultureinstitute.org)
- » **Renfrew Museum & Park**  
1010 E Main Street  
Waynesboro, PA 17268  
717-762-4723  
[www.renfrewmuseum.org](http://www.renfrewmuseum.org)
- » **Rotary Park at Wayne Gardens**  
West 9th Street  
Waynesboro, PA 17268  
717-762-2101  
[www.waynesboropa.org/rotary-park](http://www.waynesboropa.org/rotary-park)
- » **Rolando Woods Park**  
9 Charmain Road  
Waynesboro, PA 17268  
717-762-3128  
[washtwp-franklin.org/parks-recreation](http://washtwp-franklin.org/parks-recreation)
- » **Waynesboro Memorial Park**  
220 Memorial Park Drive  
Waynesboro, PA 17268  
717-762-2101  
[www.waynesboropa.org/memorial-park](http://www.waynesboropa.org/memorial-park)

## Edward Jones®




**Douglas W Smith**  
Financial Advisor

20 East Sixth Street Suite 222  
Waynesboro, PA 17268-2061  
717-762-0911

MKT-5894M-A

> [edwardjones.com](http://edwardjones.com)  
Member SIPC



**OPERATION  
SECOND  
CHANCE**

**Heroes Ridge at  
Raven Rock**

Heroes Ridge is a 275-acre retreat facility, situated at the top of a mountain, serving our wounded, injured and ill Veterans, First Responders and LEO's injured in the line of duty.

- Tranquil setting on the MD/PA border
- Spectacular views of Ski Liberty, Fairfield, PA, and much more.
- Four cabins, a dining hall, recreation center, nursery, gym, pool and pool house, horses, and ATVs.

Since inception in 2005, OSC has provided more than 11.5 million dollars in emergency financial assistance and morale related activities.

Donate at <https://operationsecondchance.org>

17870 Harbaugh Valley Road  
Shillington, MD 21780

**OPERATION  
SECOND CHANCE**  
is proud to share  
**HEROES RIDGE  
AT RAVEN ROCK**

If you are struggling or lost,  
Heroes Ridge at Raven Rock is a  
place you can always call home.



## DO | DINE | STAY

## TOURISM SPOTLIGHT

*Welcome to Franklin County!*

Welcome to Franklin County—the crossroads of the county at Routes 11 & 30 and home to America's Main Streets. Waynesboro, one of the gateway communities of Franklin County, is a destination for history, arts, recreation, natural beauty, fresh foods and warm hospitality. It has small town charm, boutique shopping, amazing art, and beautiful architecture.

Come explore Franklin County PA with wide open spaces, delightful downtowns, excellent fresh foods, and lots of relaxation and recreation. Try a food or dining tour. Discover historic sites and covered bridges. Check out the Appalachian Trail or Monterey Peak Trail. Go hiking, biking, or birding in 36 local parks and four state parks. Go golfing, enjoy skiing, or simply take in great views. For more information, go online at [ExploreFranklinCountyPA.com](http://ExploreFranklinCountyPA.com) or call 866.646.8060. Your great moments are waiting.



**Explore FRANKLINCOUNTYPA.COM**

Franklin County Visitors Center

Historic Downtowns

Barn Quilt Trail

Outdoor Recreation

Nature Walks

Covered Bridges Driving Tours

Begin your visit at the Franklin County 11/30 Visitors Center on the square in downtown Chambersburg. There's **LOTS** to do in *Franklin County!*

**11/30 AMERICA'S Main Streets**

**FRANKLIN COUNTY | PA**  
*Great moments are waiting.*

**Franklin County Visitors Bureau - 11/30 Visitors Center**  
15 South Main Street | Chambersburg, PA 17201  
717.552.2977 | 866.646.8060 | [ExploreFranklinCountyPA.com](http://ExploreFranklinCountyPA.com)



# DO | DINE | STAY

There is nothing like the charm of a small town full of rural heritage, beautiful architecture, an abundance of activities and quaint locally owned shops and restaurants.

A walk through Waynesboro is like stepping into a Hallmark movie. Whether the season is that of the fall foliage, winter wonderland, colorful spring or the summer breeze, you will feel right at home in this welcoming town.

Take a stroll down Main Street and visit the locally owned shops where you will find everything from books and unique gifts to teas, coffee, chocolates and cigars, all nestled amongst artisans, art galleries and antique shops. As you travel throughout the greater Waynesboro area be sure to stop and visit Monterey Pass Battlefield Park and Museum, the 9/11 tribute at Red Run Park, Renfrew Museum and Park and Mont Alto State Park which is one of the oldest parks in Pennsylvania. If you are feeling energetic take a hike on the Appalachian Trail.

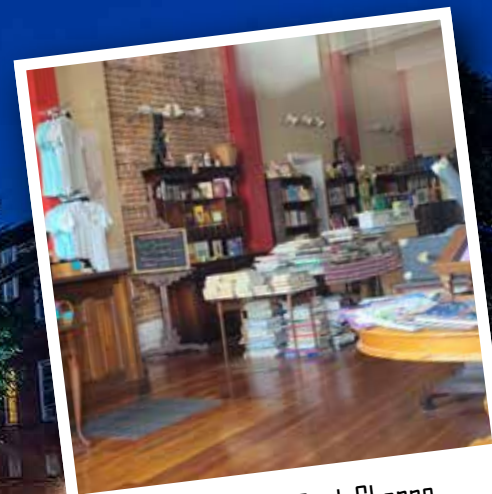
You won't find a weekend that there isn't something going on. Whether it is strolling through the farmers market, listening to musicians downtown or one of the many yearly events like the Pumpkin Festival, Tree lighting or Summer Jubilee, you and your family will have every opportunity to stay engaged with the community.



Burkes Outlet



Eichholz Flowers



The Wee Scot Book Shoppe



John Briggs  
LANDSCAPE PHOTOGRAPHER



## AREA GOLF COURSES

### Waynesboro Country Club



The Waynesboro Country Club was formed in 1928 as a non-profit club, and has remained open to all individuals regardless of race, religion, or creed. Their mission has been to maintain a membership size that will allow maximum usage of the facilities without the need of tee times.

» **Waynesboro Country Club**  
11000 Country Club Road  
Waynesboro, PA 17268  
717-762-2602  
[www.waynesborocc.com](http://www.waynesborocc.com)



The Wildflower Marketplace



Brio Coffeehouse



Waynesboro Theatre

The Institute helps people of all ages to connect with their natural and cultural worlds through programs that educate, inspire and unite people around common interests.



THE INSTITUTE • [NatureAndCultureInstitute.org](http://NatureAndCultureInstitute.org) • [info@natureandcultureinstitute.org](mailto:info@natureandcultureinstitute.org)



LQ DESIGN LLC

Waynesboro-based, international artist happily serving the area's community with graphic design needs for over 17 years.

click [lq.design](http://lq.design) // 717-387-9656

**SHOWALTER  
& MILLER**  
CERTIFIED PUBLIC ACCOUNTANTS

*Serving the community from Downtown  
Waynesboro for over 35 years.*

- Services from Corporations, Partnerships and LLCs
- Non-Profit Audits and Federal/State Filings
- Personal Income Taxes
- Retirement and Estate Planning
- Small Business Payroll and Accounting

**(717).762.8116**

42 East Main Street • Waynesboro, PA



# DO | DINE | STAY

Nothing brings people together like good food and drinks. Whether you are in search of a quick meal at a national chain, home-style fare from a diner or an upscale dining experience, the greater Waynesboro area won't disappoint. Try the Parlor House or the Velvet Café for a home-style meal. Enjoy fresh specialties available from The Bistro at 633 Brewing, Montezuma's Mexican Restaurant, Café Del Sol and The Cupcake Gypsy which also will satisfy your sweet tooth. For a delicious hot pizza or subs, be sure to check out Arturo's Pizzeria or Subway. If a casual atmosphere is what you're looking for, you can't go wrong with Monterey Pass Pub and Eatery. Their menu ranges from pub fare to seafood and brisket – all set in a Civil War setting honoring the Battle of Monterey Pass.

## LIBATIONS

Rough Edges Brewery, The Bistro at 633 Brewing, Michaux Brewing Company and Lake House Distilling Co. each offers their own unique charm while serving a variety of beer, wine and spirits. If you need a place to relax after work or head out with your friends in the evening, these hot spots won't disappoint. Check their socials for live entertainment and food truck showings.



Lake House Distilling Co.



The Bistro at 633 Brewing



Rough Edges Brewing



Michaux Brewing Company



**717.762.3913**  
[sherwin-williams.com](http://sherwin-williams.com)

Waynesboro Mall  
 606A E Main St., Waynesboro PA  
 717-762-7675 (fax)  
[sw5931@sherwin.com](mailto:sw5931@sherwin.com)

**HERE FOR THE COMMUNITY**

WAYNESBORO AREA YMCA  
[waynesboroymca.org](http://waynesboroymca.org)  
 717-762-6012

**HERE FOR YOU**  
**HERE FOR THE COMMUNITY**

When you're looking for fitness opportunities and community connections that encourage learning, health and positive values, the Waynesboro Area YMCA offers exactly what you need—and for all ages.

The Y has been a part of Waynesboro for over 105 years. Our commitment to the health and well-being of our community is stronger than ever.

A YMCA Membership is more powerful than ever before.  
 Find the membership that's best for you!  
[www.waynesboroymca.org](http://www.waynesboroymca.org)

**R. THOMAS MURPHY**  
 AND ASSOCIATES, P.C.


**ESTATE & ELDER LAW ATTORNEYS**

R. Thomas Murphy, CELA | Jared S. Childers, CELA

2021 E Main St., Waynesboro, PA 17268  
 717-762-1032

237 East Queen Street, Chambersburg, PA 17201  
 717-261-0117 • 717-762-1832 (fax)

[www.rthomasmurphy.com](http://www.rthomasmurphy.com)



Need a little  
**CLARITY?**

Crystal-clear accounting and guidance

 **OCKER**  
 ACCOUNTANTS & CONSULTANTS

[ockeraccounting.com](http://ockeraccounting.com)



**ACCREDITED SERVICES, INC.**

Building Code &amp; Rental Inspection Agency

Building Permits | UCC Code Inspections

48 South Potomac Street | Waynesboro, PA 17268  
717-762-7065 | Fax 717-762-5333[www.PermitsAndInspections.US](http://www.PermitsAndInspections.US)

Offering the best service at the lowest cost on all required permits and inspections

**CermakTech****1-888-4-CERMAK****CermakTech.com**

THE IT DEPARTMENT FOR ALL YOUR BUSINESS AND COMPUTER SOLUTION NEEDS

**WaynesboroWaterWorks.com****717-762-6677**324 W Main St  
Waynesboro, PA 17268

# DO | DINE | STAY

There is so much to do in the greater Waynesboro area that you may want to extend your visit to take in all the sites and atmosphere. Whether you are visiting family or friends, here for work or pleasure we suggest you plan a stay with Cobblestone Hotel & Suites or The Amberson House Bed & Breakfast. You will find high-quality, affordable accommodations to suit every traveling need and budget.

» **The Amberson House Bed & Breakfast**

128 W Main Street

Waynesboro, PA 17268

717-762-8112

[theambersonhouse.com](http://theambersonhouse.com)» **Cobblestone Hotel & Suites**

12695 Washington Twp Blvd

Waynesboro, PA 17268

717-765-0034

[staycobblestone.com](http://staycobblestone.com)*The Amberson House BnB**Cobblestone Hotel & Suites*



## HISTORY, ARTS AND CULTURE

- » **A & B Dance Dimensions**  
44-A E. Main Street  
Waynesboro, PA 17268  
717-762-4456  
abdancedimensions.com
- » **Alexander Hamilton Memorial Free Library**  
45 E Main Street  
Waynesboro, PA 17268  
717-762-3335 | ahmfl.org
- » **Arts Alliance of Greater Waynesboro**  
32 W Main Street  
Waynesboro, PA 17268  
717-655-2915 | artsalliancegw.org
- » **Monterey Pass Battlefield Park & Museum**  
14325 Buchanan Trail East,  
Waynesboro, PA 17268  
717-762-3128  
montereypassbattlefield.org
- » **The Ceramic Arts Center of Waynesboro**  
13 S. Church Street  
Waynesboro, PA 17268  
717-372-7906 | ceramics-nccs.org
- » **The Institute**  
P.O. Box 971  
239-B East Main Street  
Waynesboro, PA 17268  
717-762-0373  
natureandcultureinstitute.org  
info@natureandcultureinstitute.org
- » **Renfrew Museum and Park**  
1010 E. Main Street  
Waynesboro, PA 17268  
717-762-4723  
renfrewmuseum.org
- » **Waynesboro Community Concert Association**  
P.O. Box 785  
Waynesboro, PA 17268  
717-609-6853  
waynesborocommunityconcert.org



The Waynesboro Ceramic Arts Center



A & B Dance Dimensions



**HAVE BETTER  
CONVERSATIONS  
WITH YOUR MONEY.**

Bank it Easy at [fmtrust.bank](https://fmtrust.bank)

**Waynesboro**  
200 East Main Street,  
717.762.2188

**F&M  
TRUST**  
MEMBER FDIC



**717-762-6115 216 W 5th St, Waynesboro, PA 17268**

Photo © John Irwin





## Offering an Array of Services:

Cuts • Color • Highlights  
Perms • Tanning • Facials  
Manicures/Pedicures • Waxing  
Eyelash Extensions • Esthetician  
Gel Nails

1625 E. Main Street  
Waynesboro, PA

717-765-0558



## Committed to Finding the Right Solution For You

Wills & Trusts • Estate Planning  
Personal Injury • Civil Litigation  
Corporations & Business Planning  
Real Estate • Zoning/Subdivision  
Workers Compensation • Bankruptcy\*

\*We are a debt relief agency. We help people file for relief under the bankruptcy code.

13 W. Main Street • Waynesboro  
717-762-1160

www.DSSLawyers.com



# Community Resources

If you or a loved one is experiencing a life-threatening emergency requiring immediate attention, **PLEASE CALL 911**. For all other emergency service inquiries, use the phone numbers provided below.

## EMERGENCY

- » **Blue Ridge Fire & Rescue**  
13063 Monterey Lane  
Blue Ridge Summit, PA 17214  
717-749-2662
- » **Mont Alto Ambulance Squad**  
603 S. Main St.  
Mont Alto, PA 17237  
717-749-3453
- » **Mont Alto Volunteer Fire Co.**  
571 S. Main St.  
Mont Alto, PA 17237  
717-749-5151
- » **Waynesboro Ambulance Squad**  
603 W. Main St.  
Waynesboro, PA 17268  
717-762-5338
- » **Waynesboro Area Advanced Life Support – Medic 2**  
501 E. Main St.  
Waynesboro, PA 17268  
717-762-1283
- » **Waynesboro Police Department**  
57 E. Main St.  
Waynesboro, PA 17268  
717-762-2132
- » **Washington Township Police Department**  
13013 Welty Road  
Waynesboro, PA 17268  
717-762-1447

**LAW OFFICES OF  
JEFFREY S. EVANS**

Civil Litigation  
Corporation & Business Law  
DUI & Traffic Defense  
Marital & Family Law  
Personal Injury & Property  
Damage  
Real Estate  
Wills, Estates & Estate  
Planning Law

2021 East Main Street, Waynesboro, PA 17268  
(717) 762-1415 | (717) 263-5001 | 800-498-2156  
jevanslaw@supernet.com | www.jevanslaw.net

**BUCHANAN SETTLEMENT SERVICES, LTD., INC**  
Dawn E. Monn/Title Agent  
Professional Title & Settlement Services for Purchases and Refinances  
(Settlements at convenient times and locations.)





Does *your* business  
insurance earn dividends?

Ours does. **Chamber+**

Want to know more?

*Call a chamber member  
insurance agency today!*

Bell Insurance, Inc. 717-597-1151

Blue Ridge Risk Partners  
717-762-3147



[www.PennNationalInsurance.com](http://www.PennNationalInsurance.com)



## CHILD CARE

Public, private, and religious institutions throughout the area provide a variety of day care programs for children as young as six weeks of age through preschool, as well as before- and after-school programs for older children.

» **Noah's Ark Christian  
Child Care Center**  
100 S. Church Street  
Waynesboro PA 17268  
717-765-8146  
[www.facebook.com/noahsark40](https://www.facebook.com/noahsark40)

» **Today's New Start  
Learning Center**  
116 Walnut St.  
Waynesboro, PA 17268  
717-387-5692  
[www.tnslearningcenter.com](http://www.tnslearningcenter.com)

» **Waynesboro Early  
Learning Center**  
1801 E. Main St.  
Waynesboro, PA 17268  
717-762-9711  
[waynesborodaycarecenter.com](http://waynesborodaycarecenter.com)

» **Waynesboro Area YMCA**  
810 E. Main Street  
Waynesboro PA 17268  
717-762-6012  
[waynesboroymca.org](http://waynesboroymca.org)

## MEETING LOCAL NEEDS

Waynesboro Community and Human Services (WC&HS) provides a variety of programs to ensure the needs of qualifying, low-income community members are met. Efforts extend from the Waynesboro Area to Greencastle-Antrim school districts.

WC&HS services include a food bank; clothing bank; diaper bank; emergency financial assistance; information and referral; community health nurse; and counseling.

In addition to its list of services, WC&HS sponsors a yearly community Thanksgiving meal, delivering meals to shut-ins as needed, and organizes an annual Christmas boxed meal program and holiday adopt-a-family effort. These additional programs make certain low-income families and children receive warm meals and presents during the holiday season.

» **Waynesboro Community  
& Human Services**  
123 Walnut Street  
Waynesboro PA 17268  
717-762-6941  
Community Nurse:  
717-860-3081  
[www.wchs-pa.org](http://www.wchs-pa.org)



## LOCAL FOOD & PAPER PRODUCTS PANTRIES

- » Bountiful Blessings  
717-765-4170
- » Experience Life Church  
717-788-4525
- » Faith United  
Methodist Church  
717-762-2819
- » Fairview Avenue  
Brethren in Christ  
717-762-3079
- » Five Forks Brethren  
in Christ Church  
717-762-2991
- » Greencastle  
Presbyterian Church  
717-597-8333
- » Help Hotline/Church of  
the Transfiguration  
717-762-9050
- » Loving Hearts  
Dry Goods Pantry  
717-762-6224
- » The Lunch Place  
717-762-7042
- » South Central Community  
Action Program  
717-263-5060
- » Susannah's Pantry  
(Emergency Food Pantry)  
717-762-7042

## FOOD SERVICE ASSISTANCE

- » Blue Ridge Summit  
Help Hotline  
717-794-2229
- » Chambersburg Meals on Wheels  
717-263-7228
- » Salvation Army Soup Kitchen  
717-264-6169
- » Shippensburg Meals  
on Wheels  
717-261-6615
- » Women, Infants and  
Children (WIC)  
717-762-2143 or 717-263-0802

## COMMUNITY MEALS: LUNCH

- » Salvation Army Lunch  
159 Lincoln Way West  
Chambersburg, PA  
Sundays thru Wednesdays, and  
Fridays  
11:00am – 12:00pm
- » St. Seraphim  
Orthodox Center  
148 Lincoln Way West  
Chambersburg, PA  
Thursdays & Saturdays  
10:00am – 2:00pm
- » The Lunch Place  
100 S. Church Street  
Waynesboro, PA  
11:30am – 12:30pm
- » Memorial Lutheran Church  
34 E Orange Street  
Shippensburg, PA  
1<sup>st</sup> Sunday at 12:00pm

## COMMUNITY MEALS: DINNER

- » Chambersburg Church  
of the Brethren  
260 S. 4th Street  
Chambersburg, PA  
Wednesdays at 5:30pm
- » Falling Spring  
Presbyterian Church  
221 N Main Street  
Chambersburg, PA  
Sundays at 5:00pm
- » First United Methodist Church  
225 S 2nd Street  
Chambersburg, PA  
Thursday at 5:30pm
- » Christ United Methodist  
47 E King Street  
Shippensburg, PA  
2<sup>nd</sup>, 4<sup>th</sup>, & 5<sup>th</sup> Mondays  
5:00pm – 6:30pm
- » Grace United  
Church of Christ  
121 E Orange Street  
Shippensburg, PA  
3<sup>rd</sup> Monday at 5:30pm
- » Messiah United Methodist  
30 S Penn Street  
Shippensburg, PA  
2<sup>nd</sup> & 4<sup>th</sup> Tuesdays  
5:30pm
- » Prince Street Church of the  
United Brethren in Christ  
20 N Prince Street  
Shippensburg, PA  
1<sup>st</sup> & 3<sup>rd</sup> Thursdays  
Fellowship Hall at 5:30pm

## EMERGENCY SHELTER AND TRANSITIONAL HOUSING

- » CandleHeart Ministries  
717-263-5179
- » Carlisle CARES  
717-249-1009
- » Cold Weather  
Drop-In Shelter  
195 Loudon, Street  
Chambersburg, PA  
December – April  
717-262-2143
- » Franklin County  
Homeless Shelter  
223 S Main Street  
Chambersburg, PA  
717-267-3669
- » Maranatha Transitional  
Housing  
717-261-1708
- » Waynesboro New Hope  
Shelter  
717-762-5840
- » Women-In-Need Shelter  
717-264-3056

## MENTAL HEALTH SERVICES

- » Catholic Charities  
717-263-3765
- » Child Adolescent Service  
System Program (CASSP)  
717-709-2307
- » Children's Aid Society  
717-263-4159



- » Crisis Intervention  
717-264-2555, 866-918-2555
- » Contact Helpline  
Listening Line  
800-923-4616
- » Mental Health  
Association Help Line  
717-264-2916

## CHILDREN AND FAMILY

- » Adoption Horizons  
717-249-8850
- » ARC of Franklin County  
717-264-4390
- » Boys & Girls Club  
717-261-5761
- » Easter Seals of  
Chambersburg  
717-264-7578
- » Family Literacy  
717-504-4459
- » Franklin County Head Start  
717-263-8019

## COUNSELING AND OUTPATIENT PROGRAMS

- » Brook Lane  
800-342-2992, 301-733-0330
- » CenterPoint Counseling  
& Consulting  
717-267-2081
- » Frances Leiter Center  
717-264-8552

- » Franklin Family Services  
717-267-1515
- » Greencastle Family Practice &  
Psychological Services  
717-597-0095

## DETOX AND SUBSTANCE ABUSE SERVICES

- » Franklin & Fulton County  
Drug & Alcohol Programs  
717-263-1256
- » Pyramid Healthcare, Inc.  
888-694-9996
- » Roxbury Treatment Center  
800-648-4673
- » White Deer Run  
866-769-6822

## OUTPATIENT FACILITIES

- » Dohi Center for Wellbeing  
717-473-4980
- » Laurel Life  
717-261-1426
- » PA Counseling Services  
717-261-1426
- » Pyramid Healthcare  
717-261-1900
- » Roxbury Treatment Center  
800-648-4673

## SUPPORT GROUPS

- » Al-Anon/Alateen (York)  
888-425-2666
- » Alcoholics Anonymous  
800-296-9289
- » Gambler's Anonymous  
855-222-5542
- » Mothers Against Drunk  
Driving  
800-275-6233
- » Narcotics Anonymous  
800-445-3889
- » Smoking Cessation Program  
717-264-1470

## PREGNANCY SERVICES

- » Real Alternatives  
888-543-3243
- » Pregnancy Counseling Helpline  
800-537-2229
- » Pregnancy Ministries  
Chambersburg: 717-267-3738  
Greencastle: 717-597-2447  
Shippensburg: 717-532-4446  
Waynesboro: 717-762-8066
- » Waynesboro Hospital Family  
Birthing Services  
717-765-4000
- » Women, Infants and  
Children (WIC)  
Chambersburg: 717-263-0802  
Waynesboro: 717-762-2143

## RESOURCEFUL PHONE NUMBERS

- » Baby Safe Haven  
888-510-BABY
- » Centers for Disease  
Control (CDC)  
800-CDC-INFO
- » Child Abuse  
Hotline/ChildLine  
800-932-0313
- » Coalition Against Rape  
800-692-7445
- » Domestic Violence Hotline  
800-799-7233
- » Franklin County Area Agency  
on Aging/Elder Abuse  
717-263-2153  
800-642-6990
- » Franklin County Children  
& Youth Services  
717-263-1900
- » National Eating  
Disorders Association  
800-931-2237
- » National Human  
Trafficking Center
- » National Runaway  
Switchboard  
800-RUNAWAY
- » National Suicide  
Prevention Lifeline  
800-273-8255
- » WIN Victim Services  
717-264-3056, 800-621-6660



# Membership Directory

## ACCOUNTANTS

David M. Green Bookkeeping & Tax Service  
(717) 655-2560  
20 East 6th Street  
Waynesboro, PA 17268  
David Green E.A. NTPI Fellow  
dmgbkkeepingandtaxservice@gmail.com  
www.dmgbkkeepingandtaxservice.com

Musselman & Creager, LLP  
(717) 762-0331  
53 North Broad St  
Waynesboro, PA 17268  
Sidney Creager  
sidcreager@earthlink.net  
musselmanandcreager.com

Ocker Accountants & Consultants  
(717) 762-3161  
18 N. Oller Ave.  
Waynesboro, PA 17268  
Douglas Burkholder  
doug@ockeraccounting.com  
www.ockeraccounting.com

Potter, Lucinda D., CPA  
(717) 762-7185  
10 Walnut St.  
Waynesboro, PA 17268  
Lucinda Potter  
ldpottercpa@comcast.net

SEK, CPAs & Advisors  
(717) 263-3910  
804 Wayne Ave.  
Chambersburg, PA 17201  
Brad Kearns  
bkearns@sek.com  
www.sek.com

Showalter & Miller, CPA's  
(717) 762-8116  
42 E. Main St.  
Waynesboro, PA 17268  
Linden Showalter  
linden@showalterandmiller.com

Strausbaugh, Charles L., CPA, P.C.  
(717) 765-8515  
45 Walnut St.  
Waynesboro, PA 17268  
Stephanie Price  
infocls@pa.net  
www.charlesstrausbaughcpa.com

## ANTIQUES & ARTISANS

F.A.C. Finds  
(717) 476-1636  
230 South Potomac Street #E  
Waynesboro, PA 17268  
Matthew Morris  
matt99ta@gmail.com  
www.facfinds.com

The Wildflower Marketplace  
(240) 310-4264  
11729 Anthony Highway  
Waynesboro, PA 17268  
Linda Gayman  
info@shopwildflower.com  
www.shopwildflower.com

## ARCHITECTURAL DESIGN & BUILDING

Herbert, Rowland & Grubic, Inc  
(717) 263-2070  
207 Grant Street  
Chambersburg, PA 17201  
Bill Kick  
ssitman@hrg-inc.com

## ARTS, CERAMICS & POTTERY

Arts Alliance of Greater Waynesboro/  
Destination ARTS'  
(717) 655-2500  
50 West Main Street  
Waynesboro, PA 17268  
Arts Alliance Greater Waynesboro  
contact@artsalliancegw.org  
artsalliancegw.org

Ceramic Arts Center of Waynesboro, The  
(717) 372-7906  
13 S. Church St.  
Waynesboro, PA 17268  
Jenny Snyder  
info@waynesboroceramics.org  
waynesboroceramics.org

Holmes Watercolors  
(240) 315-8454  
44 South Church St.  
Waynesboro, PA 17268  
Seth Holmes  
info@holmeswatercolors.com  
holmeswatercolors.com

## ATTORNEYS

Bybel Rutledge, LLP  
(717) 655-7096  
20 East Sixth Street  
Waynesboro, PA 17268  
Alexandra Sipe, Esq.  
sipe@bybelrutledge.com  
www.bybelrutledge.com/professionals/  
attorney/alexandra-sipe

DSS Law  
(717) 762-1160  
13 W. Main St.  
Waynesboro, PA 17268  
Amy Stein  
amy@dsslawyers.com  
dsslawyers.com

Hoff, Deborah K., Attorney  
(717) 762-0371  
154 South Potomac Street  
Waynesboro, PA 17268  
Deborah Hoff  
deborahhoff@embarqmail.com

Keller, Keller, Beck & Ross LLC  
(717) 762-3331  
1035 Wayne Ave  
Chambersburg, PA 17201  
John Keller  
bmartz@kkbrlaw.com  
kkbrlaw.com

Kulla, Barkdoll and Stewart, P.C.  
(717) 762-3374  
9 E. Main St.  
Waynesboro, PA 17268  
Stephen Kulla  
contact@kullalaw.com  
www.kullalaw.com

Law Office of Jeffrey S. Evans  
(717) 762-1415  
2021 E. Main St.  
Waynesboro, PA 17268  
Jeffrey Evans  
jevanslaw@supernet.com  
www.jevanslaw.net

Misner, Timothy W., Attorney At Law  
(717) 765-8080  
39 S. Broad St.  
Waynesboro, PA 17268  
Timothy Misner  
tmisner@pa.net

Piatt Law PLLC  
(717) 655-5487  
20 East Sixth Street  
Waynesboro, PA 17268  
Jason Piatt  
jpiatt@piattlaw.com  
Piattlaw.com

R. Thomas Murphy & Associates, P.C.  
(717) 762-1032  
2005 E. Main St.  
Waynesboro, PA 17268  
Thomas Murphy  
tomm@rthomasmurphy.com  
rthomasmurphy.com

The Law Offices of Samantha K. Wolfe  
(717) 655-2676  
20 East Sixth Street, Suite 206  
Waynesboro, PA 17268  
Samantha Wolfe  
wolfe@skwlawoffice.com  
www.skwlawoffice.com



## AUTOMOTIVE SALES-NEW & USED

Blaise Alexander Chevrolet  
(717) 597-2131  
1490 Ebberts Spring Court  
Greencastle, PA 17225  
Dominic Branch  
blowe@blaisealexander.com  
blaisechevy.com

Buchanan Auto Park  
(717) 762-1107  
11582 Buchanan Trail East  
Waynesboro, PA 17268  
Julie Mummert  
julie@buchananisbetter.com  
buchananautopark.com

Buchanan Automotive  
(717) 762-3141  
1035 E. Main St.  
Waynesboro, PA 17268  
Julie Mummert  
julie@buchananisbetter.com  
www.buchananautomotiveinc.com

Keystone Ford  
(717) 264-5104  
301 Walker Road  
Chambersburg, PA 17201  
Tamara Black  
clayton@keystoneford.com  
keystoneford.com

Roger's Auto Sales  
(717) 762-2700  
7408 Anthony Highway  
Waynesboro, PA 17268  
Roger Mong  
rogersautosales@comcast.net

Wild West Motors  
(717) 655-7260  
905 West Main St  
Waynesboro, PA 17268  
Dan Long  
wildwestmotors@comcast.net  
www.wildwestmotors.com

## AUTOMOTIVE SERVICES

American Custom Auto Care  
(717) 387-0291  
2025 Market Square Blvd, Suite A/B  
Waynesboro, PA 17268  
Codee Cook  
americancustomautocare@gmail.com  
americancustomautocare.com

Anthony Highway Auto Sales & Service Inc  
(717) 765-4949  
11460 Anthony Highway  
Waynesboro, PA 17268  
jlhickok717@yahoo.com

Beavers Auto Body & Collision  
(717) 762-8322  
12691 Old Pen Mar Road  
Waynesboro, PA 17268  
Travis Beaver  
beaversautobody@gmail.com

C K Auto and Truck LLC  
(717) 765-4500  
1622 East Main Street  
Waynesboro, PA 17268  
Dawn Koontz  
Ckautoandtruck@yahoo.com

Dave Shockey Auto Body  
(717) 762-7106  
5662 Buchanan Trail East  
Waynesboro, PA 17268  
David Shockey  
shockeyauto@hotmail.com

DD & Son, Inc.  
(717) 765-8559  
127 W. Main St.  
Waynesboro, PA 17268  
Jake Dick  
dicksauto@pa.net  
www.facebook.com/DAR6048

Denny's Garage  
(717) 749-5546  
8169 Anthony Highway  
Quincy, PA 17247  
Kathy Wishard  
kwishard@hotmail.com  
dennysgarage.com

Hess Auto Body & Large Truck Repairs  
(717) 267-6091  
5960 Altenwald Road  
Waynesboro, PA 17268  
Richard Hess

JM Automotive Repair, LLC  
(717) 762-1456  
11429 Buchanan Trail East  
Waynesboro, PA 17268  
Jason Mong  
JM\_autorepair@comcast.net

Newcomer's Auto & Truck Parts  
(717) 762-1532  
6405 Nunnery Rd.  
Waynesboro, PA 17268  
Annette Walstrum  
newcomers@comcast.net  
www.newcomerstruckparts.com

Shadetree Garage  
(717) 655-5703  
P.O. Box 337  
Mont Alto, PA 17237  
Rick Lee  
rick@shadetreegarage.us  
www.shadetreegarage.us

Tom Shockey Collision, Inc.  
(717) 765-8000  
5956 Buchanan Trail East  
Waynesboro, PA 17268  
Tom Shockey  
tomshockeycollision@comcast.net  
www.tomshockeycollision.com

Wishard's Garage & Trucking  
(717) 762-4143  
5170 Buchanan Trail East  
Waynesboro, PA 17268  
James Wishard

## BAKERY

The Cupcake Gypsy  
(240) 625-2212  
118 Walnut St. Suite 101  
Waynesboro, PA 17268  
Katie Householder  
thatcupcakegypsy@gmail.com  
Facebook.com/The.Cupcake.Gypsy

## BANKS & CREDIT UNIONS

F&M Trust  
(717) 762-2188  
200 E. Main St.  
Waynesboro, PA 17268  
Chastity Wantz  
chastity.wantz@f-mtrust.com  
fmtrust.bank

M & T Bank  
(717) 765-3315  
13 W. Main St.  
Waynesboro, PA 17268  
Greg White  
gwhite@mtb.com  
locations.mtb.com

Middletown Valley Bank  
(717) 788-3250  
11337 Buchanan Trail East  
Waynesboro, PA 17268  
Cody Hill  
chill@mvbbank.com  
www.mvbbank.com

Patriot Federal Credit Union  
(717) 263-4444  
P.O. Box 778  
Chambersburg, PA 17201  
John Kilduff  
jkilduff@patriotfcu.org  
patriotfcu.org

Truist Bank  
(717) 762-3121  
232 E. Main Street  
Waynesboro, PA 17268  
Glenn Ulrich  
glenn.ulrich@truist.com  
www.truist.com



## BEAUTY SALONS & SPAS

Beautifully Designed Beauty Salon  
(717) 409-5693  
246 W. Main St.  
Waynesboro, PA 17268  
Keneisha Burton  
bdesigned2022@gmail.com

Crown Beauty and Barber Lounge LLC  
(717) 387-5215  
12080 Skyhawk Dr  
Waynesboro, PA 17268  
Amy Brown  
crownbeautybarber@hotmail.com  
crownbbl.salonrunner.com

NuVogue Hair & Tanning Studio  
(717) 765-0558  
1625 East Man Street  
Waynesboro, PA 17268  
Lisa Kline  
lisakline22@comcast.net  
nuvoguehair.com

## BEER, WINE & SPIRITS

Beer Shed, The  
(717) 762-3711  
226 Walnut St.  
Waynesboro, PA 17268  
Andrew Caron  
beershed@outlook.com  
waynesborobeer.com

The Bistro at 633 Brewing  
(717) 387-5818  
118 Walnut Street  
Suite 106  
Waynesboro, PA 17268  
Heather Weeks  
www.facebook.com/633Brewing  
waynesborobrewco@gmail.com

Lake House Distilling Company  
(301) 573-6988  
218 W 5th Street  
Waynesboro, PA 17268  
Tara Lake  
alake@lakehousedistillingco.com

Michaux Brewing Company  
(717) 765-7474  
11657 Buchanan Trl E.  
Waynesboro, PA 17268  
Lauren Murray  
michauxbrewingco@gmail.com  
michauxbrewing.com

Rough Edges Brewing  
(717) 655-7042  
91 West Main St  
Waynesboro, PA 17268  
Casey Phebus  
roughedgesbrewing@gmail.com  
www.roughedgesbrewing.com

## BOOK STORES

Wee Scot Book Shoppe  
(717) 816-6704  
4 E Main St  
Waynesboro, PA 17268  
Helen Wintle  
weescotbookshoppe@yahoo.com  
weescotbookshoppe.com

## BOWLING

Rent A Lane  
(717) 762-3762  
13954 Mar Penn Ave  
Waynesboro, PA 17268  
Roger Weaver  
roddo4@gmail.com  
rentalane.com

Sunshine Lanes  
(717) 762-3815  
11924 Buchanan Trail East  
Waynesboro, PA 17268  
Robin Reed  
bowlsunshinelanes@gmail.com

## BUILDING PERMITS & INSPECTIONS

Accredited Services, Inc  
(717) 762-7065  
48 South Potomac St.  
Waynesboro, PA 17268  
Mike Cermak  
Contact@PermitsandInspections.Us  
www.permitsandinspections.us

## CABINETRY & MILL WORK

Modern Casework Inc.  
(717) 331-1543  
206 Madison Ave.  
Waynesboro, PA 17268  
Jim Davis  
jdavis@modern-casework-inc.com  
modern-casework-inc.com

## CAMPS & RETREATS

Camp Penn  
(717) 762-2693  
8005 Old Forge Road  
Waynesboro, PA 17268  
Melissa Galla  
cpoffice@susumc.org  
www.campspenn.org

## CAR WASHES

Waynesboro Water Works, LLC  
(717) 762-6677  
324 W. Main St.  
Waynesboro, PA 17268  
Michael Cermak  
Mike@WaynesboroWaterWorks.com  
WaynesboroWaterWorks.com

## CARPETS & INTERIORS

Elite Window Fashions  
(717) 762-5627  
2102 E. Main St.  
Waynesboro, PA 17268  
Penny Waters  
elitewf@comcast.net  
www.mylitewindowfashions.com

HomeRite Windows & Doors  
(717) 749-4874  
700 S. Potomac St  
Waynesboro, PA 17268  
Nick Cecco  
nicholasrcecco@gmail.com  
homeritewaynesboro.com

Lehmans Carpet  
(717) 264-7070  
2013 Lincoln Way East  
Chambersburg, PA 17202  
Bennett Selman  
lehmanscarpet@hotmail.com  
www.lehmanscarpet.com

Olde Town Touch  
(301) 302-7311  
19776 Longmeadow Road  
Hagerstown, MD 21740  
Brenda Mowen  
brenda@oldetowntouch.com  
www.oldetowntouch.com/home.html

Sherwin-Williams Company  
(717) 762-3913  
606 A E. Main St.  
Waynesboro, PA 17268  
Chance Minter  
sw705931@sherwin.com  
www.sherwin-williams.com

Waynesboro Flooring  
(717) 788-4754  
24 N Church Street  
Waynesboro, PA 17268  
Chuck Morningstar  
sales.waynesborofloorcovering@gmail.com  
www.waynesborofloor-covering.com

## CATERING

Green Grove Gardens  
(717) 597-0800  
1032 Buchanan Trail East  
Greencastle, PA 17225  
Keith McCleaf  
keith@greengrovegardens.com  
greengrovegardens.com



## CHILDCARE

First Start Partnerships  
(717) 263-8019  
254 E. King St.  
Chambersburg, PA 17201  
Annette Searfoss  
asearfoss@firststartpartnerships.org  
www.firststartpartnerships.org

Today's New Start Learning Center  
(717) 387-5692  
116 Walnut Street  
Waynesboro, PA 17268  
Erica Freelove  
team@tnslearningcenter.com  
tnslearningcenter.com

Waynesboro Early Learning Center  
(717) 762-9711  
1801 E. Main St.  
Waynesboro, PA 17268  
Jasmin Cubit  
director@wdcc.comcastbiz.net  
www.waynesborodaycarecenter.org

## CHURCHES

Calvary Assembly of God, Inc.  
(717) 762-5432  
116 Snider Ave.  
Waynesboro, PA 17268  
Rev. Dwan Newsome  
calvary.ag@comcast.net  
discoverclvary.net

Christ United Methodist Church  
(717) 762-7042  
100 S. Church St.  
Waynesboro, PA 17268  
Brian Lucas  
umcchrist@gmail.com  
umcchrist.org

Evangelical Lutheran Church  
(717) 762-9151  
43 S. Church St.  
Waynesboro, PA 17268  
Andy Rovelstad  
officemanager@elchome.org  
elchome.org

Five Forks Brethren in Christ Church  
(717) 762-2991  
9244 Five Forks Rd.  
Waynesboro, PA 17268  
Julie Tiedemann  
office@ffbic.org  
www.ffbic.org

Hawley Memorial Presbyterian Church  
(717) 794-2637  
14753 Charmain Rd  
Blue Ridge Summit, PA 17214  
Carl Batzel  
hawleychurch@gmail.com  
www.hawleymemorial.com

Otterbein Church - Waynesboro  
(717) 762-7147  
912 South Potomac Street  
Waynesboro, PA 17268  
Michael Newman  
info@otterbeinchurch.org  
www.otterbeinchurch.org

Restoration Church of God in Christ  
(717) 655-5783  
66 West Main St.  
Waynesboro, PA 17268  
Tracey Blanks  
tlblanks@hotmail.com  
www.restorationcogic.org

Saint Andrew Catholic School  
(717) 762-3221  
213 E Main Street  
Waynesboro, PA 17268  
Sylvia Cartwright  
enrollnow@saintandrewschool.org  
www.saintandrewschool.org

St. Mary's Episcopal Church  
(717) 762-1930  
112 E. Second St.  
Waynesboro, PA 17268  
Linda Watkins  
office@stmaryswaynesboro.org  
stmaryswaynesboro.diocpa.org

Trinity United Church of Christ  
(717) 762-7191  
30 W. North St.  
Waynesboro, PA 17268  
Bruce Druckenmiller  
tuccsecretary@gmail.com  
tuccwboro.com

## CLOCK REPAIR

The House of Time  
(717) 398-0799  
1507 East Main St.  
Waynesboro, PA 17268  
James Michaels  
jim@watchmaker.net

## COFFEE SHOPS

Brio Coffeehouse, Inc  
(717) 889-0412  
2 E Main St  
Waynesboro, PA 17268  
Rodney Cool  
briocoffeehouse@gmail.com  
briocoffeehouse.com

Dunkin Donuts / Ridhi Siddhi PA, Inc  
(732) 822-1173  
1900 East Main St  
Waynesboro, PA 17268  
Nick Patel  
patel.nic@gmail.com  
www.dunkindonuts.com

## COLLECTION SERVICES

Montgomery Collections  
1-301-717-3829  
P.O. Box 222  
Quincy, PA 17268  
Gary Poole  
montgomerycollections@gmail.com

## COMMUNITY ASSISTANCE

Waynesboro Community & Human Services  
(717) 762-6941  
123 Walnut St.  
Waynesboro, PA 17268  
Denise Esser  
deniseesser@wchs-pa.org  
wchs-pa.org

## COMPUTER SERVICE & SALES

Cermak Technologies, Inc.  
(717) 762-8234  
46 S Potomac St  
Waynesboro, PA 17268  
Michael Cermak  
contact@cermaktech.com  
cermak.tech

JB Technical Solutions Inc.  
(717) 316-0078  
33 West Main St.  
Waynesboro, PA 17268  
Joshua Brown  
joshbrown@jbtechnicalolutions.com  
www.jbtechnicalolutions.com

## CONSULTANTS

ISO Advantage, LLC  
(717) 339-8365  
11003 Old Forge Rd.  
Waynesboro, PA 17268  
Judith Markel  
isoadvantage@comcast.net  
isoadvantages.com

Smith & Associates  
(717) 762-6861  
9071 Meadowbrook Circle  
Waynesboro, PA 17268  
Michael Smith  
writingsmith@yahoo.com  
www.michaelraysmith.com



## CONTRACTORS

GRC General Contractor Inc.  
(717) 762-1116  
P.O. Box 216  
Zullinger, PA 17272  
James Rock  
jim@grcgc.com  
grcgc.com

Hammond's Painting  
(717) 387-1542  
412 Clayton Ave  
Waynesboro, PA 17268  
Kevin Hammond  
okhammond@comcast.net

Hess Custom Builders  
(717) 762-2902  
11833 Country Club Road  
Waynesboro, PA 17268  
James Hess

Waynesboro Construction Company, Inc.  
(717) 762-1151  
P.O. Box 229  
Waynesboro, PA 17268  
Herb Sandifer  
herb@waynesboroconstruction.com  
www.waynesboroconstruction.com

## COUNSELING

Pregnancy Ministries, Inc.  
(717) 655-5603  
245 South Potomac Street  
Waynesboro, PA 17268  
Sara Hollinshead  
pmiwboro2@gmail.com  
pregnancyministries.org

Spring of Hope Prayer Counseling  
(717) 762-0234  
230 S. Potomac St.  
Waynesboro, PA 17268  
Wayne Kuhns  
office@springofhopepa.com  
springofhope.org

## DANCE

A&B Dance Dimensions  
(717) 762-4456  
44-A E. Main St.  
Waynesboro, PA 17268  
Barbara Hickman  
abdancedimensions@yahoo.com  
abdancedimensions.com

## DENTAL CARE

Covenant Family Dentistry  
(717) 762-1515  
750 S. Potomac St.  
Waynesboro, PA 17268  
Todd Wolff  
info@covenantfamilydentistry.com  
covenantfamilydentistry.com

## DESIGN & PLANNING

Edge Fiber Solutions LLC  
(410) 207-0875  
5896 Buttermilk Rd  
Waynesboro, PA 17268  
Sarah Gardner  
sgardner@edge-fs.com  
www.edgefibersolutions.com

## DISPUTE RESOLUTIONS

Franklin County Dispute Resolution Center  
(717) 762-3374  
9 E. Main St.  
Waynesboro, PA 17268  
Clinton Barkdoll  
clint@kullalaw.com

## DRUG STORES

Antietam Pharmacy  
(717) 762-1164  
730 S. Potomac St.  
Waynesboro, PA 17268  
David Riley  
antietampharmacy@hotmail.com  
antietampharmacy.com

Savage Family Pharmacy  
(717) 762-2915  
604 E. Main St.  
Waynesboro, PA 17268  
Rodger Savage  
info@savagerx.com  
www.savagerx.com

## ECONOMIC DEVELOPMENT

Franklin County Area Development Corporation  
(717) 263-8282  
1900 Wayne Road  
Chambersburg, PA 17202  
Mike Ross  
info@fcadc.com  
fcadc.com

Greater Chambersburg Chamber of Commerce  
(717) 264-7101  
100 Lincoln Way East  
Chambersburg, PA 17202  
Steve Christian  
chamber@chambersburg.org  
chambersburg.org

Greater Waynesboro Chamber of Commerce  
(717) 762-7123  
118 Walnut St.  
Waynesboro, PA 17268-1669  
Jackie Mowen  
director@waynesboro.org  
www.waynesboro.org

Greencastle-Antrim Chamber of Commerce  
(717) 597-4610  
217 E Baltimore St  
Greencastle, PA 17225  
Debby Cunningham  
Debby@greencastlepachamber.org  
greencastlepachamber.org

Mainstreet Waynesboro, Inc.  
(717) 762-0397  
13 W. Main St.  
Waynesboro, PA 17268  
Bill Kohler  
bill@waynesboro.org  
www.mainstreetwaynesboro.org

Rouzeville Business Association  
(717) 765-8662  
P.O. Box 304  
Rouzeville, PA 17250  
Stewart McCleaf  
president@rouzeville.org  
rouzeville.org

Shippensburg Area Chamber of Commerce  
(717) 532-5509  
68 West King Street  
Shippensburg, PA 17257  
Scott Brown  
chamber@shippensburg.org  
www.shippensburg.org

Shippensburg Small Business  
Development Center  
(717) 477-1935  
1871 Old Main Dr.  
Shippensburg, PA 17257  
Georgina Cranston  
gtcranston@ship.edu  
ship.edu/sbdc

Tuscarora Area Chamber of Commerce  
(717) 328-5827  
19 N. Main St.  
Mercersburg, PA 17236  
Chris Ardinger  
info@mercersburg.org  
www.mercersburg.org

Waynesboro Industrial  
Development Corporation  
(717) 762-7123  
118 Walnut St.  
Waynesboro, PA 17268  
David Mackley  
director@waynesboro.org  
www.waynesboroidc.org

## ELECTRICIAN

Decker Electrical Services, Inc.  
(717) 762-4111  
2020C Market Square Blvd  
Waynesboro, PA 17268  
Gary Decker  
gdecker3822@comcast.net



G. W. Electric Company, Inc.  
(717) 597-7137  
1524 Buchanan Trail East  
Greencastle, PA 17225  
Robert Wolff  
gwelectric@pa.net  
gwelectricpa.com

Jake's Electric, LLC  
(717) 977-6382  
5978 Marsh Rd.  
Waynesboro, PA 17268  
James Myers  
jmyers5978@gmail.com

Keystone Valley Electric, Inc.  
(717) 762-8592  
P.O. Box 805  
Waynesboro, PA 17268  
Steven Lanehart  
lindakve@comcast.net

## EMERGENCY SERVICES

Blue Ridge Fire & Rescue  
(717) 794-2323  
13063 Monterey Lane  
Blue Ridge Summit, PA 17214  
Eric Patterson  
fferic09@gmail.com  
brfire@comcast.net

## ENGINEERS

Waynesboro Design Services, Inc.  
(717) 765-4569  
11662 Orchard Rd  
Waynesboro, PA 17268  
Kevin Mouer  
sales@waynesborodesign.com  
waynesborodesign.com

## ENTERTAINMENT

Capitol Theatre Center  
717-263-0202  
159 S. Main Street  
Chambersburg, PA 17201  
Kelly Kozlowski  
kkozlowski@thecapitoltheatre.org  
www.thecapitoltheatre.org

Rich Fehle Singer/Songwriter  
(717) 552-1766  
12925 Old Pen Mar Rd.  
Waynesboro, PA 17268  
Richard Fehle  
richfehle@gmail.com  
www.facebook.com/RichFehleMusic

Warehouse Cinemas  
(240) 608-4900  
20145 Leitersburg Pike  
Hagerstown, MD 21742  
Arianna Taylor  
arianna@warehousecinemas.com  
warehousecinemas.com/leitersburg

Waynesboro Community Concert Association  
(717) 609-6853  
P.O. Box 785  
Waynesboro, PA 17268  
Cherry Snyder  
info@waynesboropaconcerts.org  
waynesboropaconcerts.org

Waynesboro Theatre  
(717) 387-5335  
75 West Main St  
Waynesboro, PA 17268  
Devyn Blubaugh  
waynesborotheatreonmain@gmail.com  
www.waynesborotheatre.org

## ENVIRONMENT & CULTURAL EDUCATION

The Institute  
(717) 762-0373  
239B East Main Street  
Waynesboro, PA 17268  
Tracy Holliday  
info@natureandcultureinstitute.org  
natureandcultureinstitute.org

## EVENT PLANNING

Tri State Event Planning Services  
(717) 262-8839  
136 Harvest Wagon Way  
Greencastle, PA 17225  
cindyb@tristateevents.org  
tristateevents.org

## EXCAVATING, PAVING & SEALCOATING

AAA Paving & Excavating, Inc.  
(717) 762-4940  
8166 Mentzer Gap Road  
Waynesboro, PA 17268  
Lisa Moats  
aaa@aaapavinginc.com  
AAAPavingInc.com

Country Sealcoating's & Paving  
(717) 762-0600  
800 West King Street  
Waynesboro, PA 17268  
Andrew Koons  
andrew@countrysealcoatings.com  
countrysealcoatings.com

Ganoe Paving Inc  
(717) 597-2567  
1455 Buchanan Trail West  
Greencastle, PA 17225  
Dirk Mowen  
ganoepavinginc@comcast.net  
www.ganoepavinginc.com

## FARMS/RETAIL

Ivy Hill Farm  
(240) 527-9268  
13840 Smithsburg Pike  
Smithsburg, MD 21783  
Karen Martin  
martinivy@aol.com  
ivyhillfarm.com

Sugar Hollow Farm Alpacas, LLC  
(717) 749-7056  
9955 Masters Road  
Waynesboro, PA 17268  
Kathryn Brown  
info@shfalpacas.com  
www.shfalpacas.com

## FENCING (SPECIALTY)

Trident Enterprises International Inc.  
(717) 762-5912  
144 Cleveland Ave.  
Waynesboro, PA 17268  
Linda Sheehan  
linda@tridentcorp.com  
www.tridentcorp.com

## FINANCIAL & INVESTMENT SERVICES

Edward Jones - Bob Correll  
(717) 765-0166  
626 North Grant St  
Waynesboro, PA 17268  
Bob Correll  
robert.correll@edwardjones.com  
www.edwardjones.com

Edward Jones - Douglas W. Smith  
(717) 762-0911  
20 E. Sixth St.  
Waynesboro, PA 17268  
Douglas Smith  
douglas.smith@edwardjones.com  
edwardjones.com/douglas-smith

Edward Jones- Marissa Correll  
(717) 655-2244  
38 Main St  
Waynesboro, PA 17268  
Marissa Correll  
marissa.pintoburt@edwardjones.com  
www.edwardjones.com

JZ Financial Management  
(717) 660-0709  
Virtual Services  
Jerry Zeigler  
jerryzeigler@jzfinancialmanagement.com  
jzfinancialmanagement.com

LBG Lending Services, LLC  
(717) 788-4988  
114 Walnut St.  
Waynesboro, PA 17268  
Donald Blanks  
lbglending@gmail.com  
www.lbglending.com

Primerica Financial Services  
(717) 749-5421  
1930 Scotland Ave  
Chambersburg, PA 17201  
Bob Allison  
robertharryallison@primerica.com  
www.primerica.com/public

Sterling Financial Management, Inc.  
(301) 733-7777  
1825 Howell Rd  
Hagerstown, MD 21740  
David Neterer  
david.neterer@sterlingfm.com  
www.sterlingfm.com

Tesla Payments  
(717) 460-1160  
132 Commons Ct  
Chadds Ford, PA 19317  
Boyana Milanovic  
bm@teslapayments.com  
www.teslapayments.com

## FIRE & WATER DAMAGE RESTORATION

Rainbow International of Waynesboro  
(717) 788-3032  
4758 Zane A Miller Drive  
Waynesboro, PA 17268  
Kelli Furman  
waynesboro.sales@rainbowintl.com

## FITNESS

Fort Ritchie Community Center  
(301) 241-5085  
14421 Lake Royer Drive  
Cascade, MD 21719  
Samantha Phillips  
bbrowning@thefrcc.org  
thefrcc.org

Waynesboro Area YMCA  
(717) 762-6012  
810 E. Main St.  
Waynesboro, PA 17268  
Amanda Gietka  
amanda@waynesboroymca.org  
waynesboroymca.org

WBO Health & Fitness  
(717) 655-5024  
118 Walnut St  
Waynesboro, PA 17268  
Dylan Bryan  
dmbryan@wbofit.com

## FLORISTS

Eichholz Flowers  
(717) 762-7131  
133 E. Main St.  
Waynesboro, PA 17268  
Jonathan Ingels  
info@eichholzflowers.com  
www.eichholzflowers.com

## FUNERAL & CREMATION SERVICES

Grove-Bowersox Funeral Home, Inc.  
(717) 762-2811  
50 S. Broad St.  
Waynesboro, PA 17268  
Jeremy Bowersox  
info@bowersoxfuneralhomes.com  
www.bowersoxfuneralhomes.com

## GOLF COURSES & GOLF SERVICES

Waynesboro Country Club  
(717) 762-8401  
11000 Country Club Road  
Waynesboro, PA 17268  
Steven Golssinger  
ronda@waynesborocc.com  
Waynesborocc.com

## GOVERNMENT & ELECTED OFFICIALS

Borough of Waynesboro  
(717) 762-2101  
P.O. Box 310  
Waynesboro, PA 17268  
Jason Stains  
jason@waynesboropa.org  
waynesboropa.org

Congressman Dr. John Joyce  
(717) 753-6344  
100 Lincoln Way East  
Chambersburg, PA 17201  
ashleigh.presnar@mail.house.gov  
johnjoyce.house.gov

Franklin County Commissioners  
(717) 264-4125  
272 N. Second St.  
Chambersburg, PA 17201  
David Keller  
commissioners@franklincountypa.gov  
www.franklincountypa.gov

Mont Alto Borough  
(717) 749-5808  
3 North Main St  
Mont Alto, PA 17237  
Patti Stitley  
mab@comcast.net  
montaltoborough.com

Quincy Township Supervisors  
(717) 762-5679  
7575 Mentzer Gap Road  
Waynesboro, PA 17268  
Cathy Kozain  
info@quincytwp.org  
www.quincytwp.org

Representative Paul Schemel  
(717) 749-7384  
1402 East Main Street  
Waynesboro, PA 17268  
Ashlyn Shockey  
ashockey@pahousegop.com  
www.RepSchemel.com

Senator Doug Mastriano  
(717) 264-6100  
37 South Main Street, Suite 200  
Chambersburg, PA 17201  
Judy Wilson  
jkwilson@pasen.gov  
www.senatormastriano.com

Washington Township Supervisors  
(717) 762-3128  
13013 Welty Road  
Waynesboro, PA 17268  
Jeff Geesaman  
jbg@washtwp-franklin.org  
www.washtwp-franklin.org

## GRAPHIC DESIGN

LQ Design LLC  
(717) 387-9656  
206 W. Main St.  
Waynesboro, PA 17268  
Lesley Quesada  
lqdesignstudios@gmail.com  
www.lqdesignstudios.com

## HEALTH CARE CENTERS & HOSPITALS

Elevation Healthcare  
(717) 655-2509  
1647 East Main Street  
Waynesboro, PA 17268  
Courtney Bohn  
Info@elevationwell.com  
www.elevationwell.com

Keystone Health  
(717) 709-7900  
111 Chambers Hill Drive  
Chambersburg, PA 17201  
Jan Lewis  
email@keystonehealth.org  
keystonehealth.org

Pediatric Specialists of Franklin County, P.C.  
(717) 765-6621  
27 Vista Drive  
Waynesboro, PA 17268  
Fouzia Rishi  
www.waynesboropediatrician.com

WellSpan Waynesboro Hospital  
(717) 765-4000  
501 E. Main St.  
Waynesboro, PA 17268  
Brenda Kempa  
bkempa@wellspan.org  
www.wellspan.org



## HEATING &amp; AIR CONDITIONING

McLaughlin's Energy Services  
(717) 762-5711  
11931 Buchanan Trail East  
Waynesboro, PA 17268  
Mark McLaughlin  
mark@mclheat.com  
mclheat.com

Paul W. McCarney Heating/Cooling  
(717) 762-8312  
439 W. Fifth St.  
Waynesboro, PA 17268  
Vicky McCarney  
pvmc\_77@yahoo.com  
www.homeadvisor.com

Penn Mar Oil, Div. of Tevis Energy  
(717) 762-3811  
122 Madison Ave.  
Waynesboro, PA 17268  
Thomas McKenzie  
Tom@pennmaroil.com  
www.pennmaroil.com

Thompson Oil Company, Inc.  
(717) 762-3011  
329 West North Street  
Waynesboro, PA 17268  
Kaitlyn Cashmere  
support@thompsonoilco.com  
www.thompsonoilco.com

## HOLISTIC HEALTH

The Center of Balance, LLC  
(717) 643-1404  
29 N. Jefferson Street  
Greencastle, PA 17225  
Louise Kemper  
centerofbalancelc@gmail.com  
thecenterofbalancelc.com

## HOTELS, MOTELS, &amp; BED AND BREAKFASTS

Cobblestone Hotel & Suites  
(717) 765-0034  
12695 Washington Township Blvd.  
Waynesboro, PA 17268  
Janet Kuhn  
gm.pa0034@staycobblestone.com  
staycobblestone.com

The Amberson House  
(717) 762-8112  
128 West Main Street  
Waynesboro, PA 17268  
Emily Bizzarri  
ejbizzarri@earthlink.net  
www.theambersonhouse.com

## ICE CREAM

Dairy Queen  
(717) 762-8944  
1951 E. Main St.  
Waynesboro, PA 17268  
Ann Ashburn  
ashburn0078@gmail.com  
dairyqueen.com

## INDEPENDENT, ASSISTED LIVING &amp; HOME CARE

Hearthstone Retirement Home & In-Home Care Services  
(717) 762-6313  
102 S. Potomac St.  
Waynesboro, PA 17268  
Joey Thomas  
jthomas01@embarqmail.com  
www.hearthstoneretirementhome.org

Leland of Laurel Run, The  
(717) 749-0083  
120 W. Main St.  
Waynesboro, PA 17268  
Rene Shumaker  
rshumaker@lelandpersonalcare.com  
lelandpersonalcare.com

Oasis Senior Advisors  
(240) 866-0064  
32 Ashley Way  
Myersville, MD 21773  
Cathy Baker  
OSATeam@YourOasisAdvisor.com  
www.oasisadvisoradvisors.com/frederick

Quincy Village  
(717) 749-2300  
6596 Orphanage Road  
Waynesboro, PA 17268  
Julie Nelson  
jnelson@psl.org  
quincylvillage.org

Visiting Angels  
(717) 749-0458  
10764 Buchanan Trail East  
Waynesboro, PA 17268  
Brian Bailie  
office.waynesboro@visitingangels.com  
www.visitingangels.com

## INDIVIDUALS

Arthur, Dan  
(717) 762-3873  
P.O.Box 822  
Waynesboro, PA 17268  
dwarthur@innernet.net

Beck, Stephen E.  
(717) 762-9423  
12199 Gehr Road  
Waynesboro, PA 17268  
beck.se@comcast.net

Dick, Phyllis Alta  
(717) 794-5120  
13317 North Ave.  
Blue Ridge Summit, PA 17214  
sweeping731@gmail.com

Frances Miller  
(717) 762-2835  
10590 Susquahanna Ave. Way  
Waynesboro, PA 17268  
crmiller27@Comcast.net

Marks, Dick  
(717) 762-7343  
80 Wynnecrest Dr  
Waynesboro, PA 17268  
dick@dickmarks.org

Sue James, Author  
(717) 809-1135  
141 Briar Ridge Drive  
Waynesboro, PA 17268  
suejames1114@gmail.com

## INSURANCE

Aflac/Destiny Witmer  
(240) 310-8992  
3886 Grosh Rd  
Greencastle, PA 17225  
Destiny Witmer  
destiny\_witmer@us.aflac.com

AFS Insurance & Financial Service  
(717) 762-5780  
11001 Anthony Hwy  
Waynesboro, PA 17268  
Jen Moore  
email@afsmainstreet.com  
www.afsagent.com

Antrim Insurance Agency, Inc.  
(717) 762-4565  
1685 E. Main St.  
Waynesboro, PA 17268  
David Rajtik  
david@antriminsurancepa.com  
antriminsurancepa.com

Bell Insurance, Inc.  
(717) 597-1151  
110 E. Franklin St.  
Greencastle, PA 17225  
Carrie Heckman  
checkman@bellinsuranceinc.com  
bellinsuranceinc.com

Blue Ridge Risk Partners  
(717) 762-3147  
239 E. Main St  
Waynesboro, PA 17268  
Greg Duffey  
Greg.duffey@blueridgeriskpartners.com  
blueridgeriskpartners.com

Bradley Belford Agency, LLC  
(717) 256-0544  
343 A South Potomac St  
Waynesboro, PA 17268  
Bradley Belford  
bradley@belfordagency.com  
www.facebook.com/bradleybelfordagency

Erin Shank Insurance Agency/State Farm  
(717) 762-7101  
76 East Main St.  
Waynesboro, PA 17268  
Erin Shank  
Erin@erinshankinsurance.com  
Erinshankinsurance.com

My Benefit Advisor/ChamberChoice  
(800) 377-3539  
100 Pinewood Lane  
Warrendale, PA 15086  
Rob Higginbotham  
rob.higginbotham@mybenefitadvisor.com  
www.chamberchoice.com

Penn National Insurance  
(800) 388-4764  
2 N. Second St.  
Harrisburg, PA 17105  
www.pennnationalinsurance.com/portal/

State Farm Insurance - Chad Slimmer  
(717) 762-0650  
11875 N. Landis Ave.  
Waynesboro, PA 17268  
Chad Slimmer  
chad@chadslimmer.com  
www.chadslimmer.com

Strickler Agency  
(717) 263-4179  
1200 McKinley St  
Chambersburg, PA 17202  
Roxi Seilhamer  
rseilhamer@stricklerins.com  
www.stricklerins.com

## LANDSCAPING

B&D Lawn & Landscape, Inc.  
(717) 765-4551  
9077 Goods Dam Road  
Waynesboro, PA 17268  
Brian Stum  
brian@banddlawnandlandscape.com  
www.banddlawnandlandscape.com

B&H Lawn and Floral Inc.  
(717) 762-2439  
7620 Anthony Highway  
Waynesboro, PA 17268  
Jim Bakner  
bhlawnservices@yahoo.com  
www.bandhincfloral.com

Green Arbor Landscape, LLC  
(717) 762-9344  
11401 Buchanan Trail East  
Waynesboro, PA 17268  
John Beck  
johnryan@thegreenarbor.com  
www.thegreenarbor.com

S. Stine & Son Lawn & Garden  
(717) 729-5348  
10837 Wharf Road  
Waynesboro, PA 17268

## LIBRARY

Alexander Hamilton Memorial Free Library  
(717) 762-3335  
45 E. Main St.  
Waynesboro, PA 17268  
Laura Bailey  
ahmfl@hotmail.com  
www.ahmfl.org

## LOGISTICS

Onpoint Logistics Inc.  
(915) 309-5548  
523 Creekside Blvd  
Waynesboro, PA 17268  
Jason Wilson  
dspjw21@gmail.com

## MANUFACTURING & PRODUCTION

Antrim Machine Co. /TA Castle Machine  
(717) 369-3184  
5865 Bullitt Rd  
Greencastle, PA 17225  
Keith Cordell  
castlema@pa.net

APX Null Machine Shop  
(717) 597-3330  
95 Commerce Ave  
Greencastle, PA 17225  
Joel Bradnick  
jbradnick@apx-coatings.com  
APXNullMachineShop.com

Beck Manufacturing  
(717) 762-9141  
330 East Ninth St  
Waynesboro, PA 17268  
Chris Hohl  
info@beckmfg.com  
beckmfg.com

DanFoss/AAIM Controls  
(717) 765-9100  
11885 Mutual Dr  
Waynesboro, PA 17268  
Brian Davis  
briandavis@danfoss.com  
www.danfoss.com

Fil-Tec Inc.  
(301) 824-6166  
P.O. Box B  
Hagerstown, MD 21720  
Vincent (Ted) Schoeck  
tschoeck@fil-tec.com  
www.fil-tec.com

Jamison-B.M.P., LLC  
(240) 313-7914  
55 J.V. Jamison Drive  
Hagerstown, MD 21740  
John Williams  
jtw@jamisondoor.com  
www.jamisondoor.com

Johnson Controls  
(717) 762-2121  
100 C.V. Ave.  
Waynesboro, PA 17268  
Emily Hess  
emily.s.hess@jci.com  
www.johnsoncontrols.com

Guardian Booth  
(877) 963-8190  
13338 Midvale Road  
Waynesboro, PA 17268  
info@guardianbooth.com  
www.guardianbooth.com

Lightning Industrial Tool Grinding  
(717) 762-5211  
P.O. Box 822  
Cascade, MD 21719  
Terry LeFevre

Manitowoc Crane-Group - Grove Worldwide  
(717) 597-8121  
1565 Buchanan Trail E.  
Shady Grove, PA 17256  
Sheena Showe  
Sheena.showe@manitowoc.com  
www.manitowoccranes.com/en

Manufacturers' Association  
(717) 843-3891  
3405 Board Road, Ste 100  
York, PA 17406  
Karla Wolf  
kwolf@mascpa.org  
www.mascpa.org

ProTube, Inc.  
(717) 765-9400  
4872 Zane A. Miller Drive  
Zullinger, PA 17272  
Jared Thomas  
jthomas@protube.net  
protube.net

T E Connectivity  
(717) 765-3283  
627 N. Grant st  
Waynesboro, PA 17268  
Carrie Wivell  
carrie.wivell@te.com  
te.com



## MARKETING & ADVERTISING

2085 Productions  
(717) 387-2118  
9471 Heshshire Court  
Waynesboro, PA 17268  
Andrew Gehman  
andrew@year2085productions.com  
www.year2085productions.com

## MASONRY

K & M Outdoor  
(717) 765-0010  
10972 Wayne Highway  
Waynesboro, PA 17268  
David Kirkpatrick  
dave@kmoutdoor.com  
www.kmoutdoor.com

L.T. Rush Stone and Fireplace  
(717) 765-6941  
4493 Buchanan Trail East  
Waynesboro, PA 17268  
Larry Rush  
troy@ltrush.com  
ltrushstone.com

Nolan Masonry LLC  
(717) 552-4874  
PO Box 111  
Mont Alto, PA 17237  
Leanne Nolan  
Nolanmasonry@comcast.net  
www.nolanmasonry.com

## MASSAGE THERAPY

Peace and Serenity Spa  
(717) 372-1556  
230 S Potomac St.  
Waynesboro, PA 17268  
Becky Hess  
beckyhess@peaceserenityspa.com  
peaceserenityspa.com

## MINING & QUARRIES

New Enterprise Stone & Lime  
(717) 267-2244  
297 Quarry Road  
Chambersburg, PA 17202  
Jim Zimmerman  
JCZimmerman@nesl.com  
www.nesl.com

Specialty Granules LLC  
(717) 794-2184  
1455 Old Waynesboro Rd  
Blue Ridge Summit, PA 17214  
Kevin Kelly  
kevin.kelly@specialtygranules.com  
www.specialtygranules.com

## MOTORSPORTS

Stoneham's Motorsports, Inc.  
(717) 762-7420  
5890 Buchanan Trail East  
Waynesboro, PA 17268  
Lisa Stoneham  
mail@stonehams.com  
www.stonehamsonline.com

## MOVING & STORAGE

Quincy & Waynecastle Storage  
(717) 749-5944  
7485 Anthony Highway  
Waynesboro, PA 17268  
Nancy Pentz  
storage@qwmastorage.com  
qwmastorage.com

Red Roof Storage  
(717) 765-0071  
320 S. Potomac St.  
Waynesboro, PA 17268  
Connie Zimmerman  
redroofstorage@embarqmail.com

WDStorage  
(717) 762-1755  
11662 Orchard Rd.  
Waynesboro, PA 17268  
Kevin Mouer  
storage@waynesborodesign.com  
www.storage.waynesborodesign.com

Zody's Moving & Storage, Inc.  
(717) 762-4815  
11737 Wharf Road  
Waynesboro, PA 17268  
Lauren Andree  
laurenzodymoving@gmail.com  
www.zodymoving.com

## MUSEUMS, PARKS & HISTORY

Friends of the Monterey Pass Battlefield, Inc  
(717) 762-5619  
14325 Buchanan Trail East  
Waynesboro, PA 17268  
Lee Royer  
montereypassbattlefield@gmail.com  
www.montereypassbattlefield.org

Renfrew Museum and Park  
(717) 762-4723  
1010 E. Main St.  
Waynesboro, PA 17268  
Becky LaBarre  
info@renfrewmuseum.org  
www.renfrewmuseum.org

## NON-PROFITS

BLAST  
(240) 344-5093  
14959 Buchanan Trail East  
Waynesboro, PA 17268  
Stacie Massette  
smasset@wellspan.org  
www.blastofwaynesboro.com

Breast Cancer Awareness Cumberland Valley  
(301) 791-5843  
12916 Conamar Drive  
Hagerstown, MD 21742  
Stacy Horst  
stacy@bcacv.org  
www.bcacv.org

Connection, Inc. The  
(717) 387-2403  
112 Walnut St.  
Waynesboro, PA 17268  
Mandy Hood  
connectingwomenwithgod@gmail.com  
connectingwomenwithgod.com

Franklin County Community Foundation  
(717) 236-5040  
P.O. Box 678  
Harrisburg, PA 17108  
Janice Black  
janice@tfec.org  
www.tfec.org

Habitat for Humanity of Franklin County  
(717) 267-1899  
1502 Lincoln Way E  
Chambersburg, PA 17202  
Tom Reardon  
info@habitatfranklinpa.org  
habitatfranklinpa.org

Horizon Goodwill Industries  
(301) 733-7330  
14515 Pennsylvania Ave  
Hagerstown, MD 21742  
Craig Foster  
marketing@goodwill-hgi.org  
www.horizongoodwilli.org

LIU12 Franklin County Literacy Council  
(717) 504-4459  
101 E. King Street  
Chambersburg, PA 17201  
Angie Wilt  
liufcl@iu12.org  
www.iu12.org/fcl

Operation Second Chance  
(301) 972-1080  
20251 Century Blvd  
Germantown, MD 20874  
Cindy McGrew  
Cindy@operationsecondchance.org  
www.operationsecondchance.org

Rotary Club of Waynesboro  
P.O. Box 523  
Waynesboro, PA 17268  
Brian Shook  
www.rotaryclubofwaynesboro.org

United Way of Franklin County  
(717) 262-0015  
182 S. Second Street  
Chambersburg, PA 17201  
Amy Hicks  
ahicks@uwfcpa.org  
www.uwfcpa.org

WALL (Waynesboro Lioness Lions)  
(717) 794-5120  
PO Box 797  
Waynesboro, PA 17268  
Phyllis Dick  
sweeping731@gmail.com

Waynesboro Beneficial Fund.  
(717) 762-7123  
118 Walnut St.  
Waynesboro, PA 17268  
Brian Shook  
director@waynesboro.org  
waynesborogives.com

Waynesboro Lions Club  
(717) 762-7570  
PO Box 786  
Waynesboro, PA 17268  
Sandy Eisenhard  
mike@tomsfam.com  
e-clubhouse.org/sites/waynesborolionsclubpa

Waynesboro Summer Jubilee, Inc.  
(717) 762-7123  
118 Walnut St.  
Waynesboro, PA 17268  
Suzanne Menard  
smenard@salesforce.com  
www.summerjubilee.org

## OFFICE EQUIPMENT & SUPPLIES

Dice Office Equipment  
(717) 597-0300  
20 Commerce Ave.  
Greencastle, PA 17225  
Kevin Swope  
kevin@diceoe.com  
diceoe.com

Guernsey, Inc  
(717) 948-5238  
5040 Louise Dr  
Mechanicsburg, PA 17055  
Ray Brosius  
rbrosius@buyguernsey.com  
www.buyguernsey.com

## OPTICAL SERVICES

Antietam Eye Associates, Inc.  
(717) 387-5657  
1051 E. Main St.  
Waynesboro, PA 17268  
Jerzy Kornilow  
eyecare@antietameye.com  
antietameye.com

## PEST CONTROL

Real Kill Termite & Pest Control, LLC  
(717) 762-8448  
33 E. Main St.  
Waynesboro, PA 17268  
Bob Summers  
realkilltermite@gmail.com  
realkillpestcontrol.com

## PET SERVICES & SUPPLIES

Antietam Humane Society, Inc.  
(717) 762-9091  
8513 Lyons Road  
Waynesboro, PA 17268  
Kacie Morrell  
ahsinc@pa.net  
antietamhumanesociety.org

Dog Doodie Pawtrol  
(717) 655-6203  
145 S. Phillips Ave  
Waynesboro, PA 17268  
Timothy Gauthier  
dogdoodiepawtrol@gmail.com  
www.dog-doodie-pawtrol.ueniweb.com

For the Love of Dogs LLC  
(410) 241-8154  
30 W Main Street  
Waynesboro, PA 17268  
Lisa Arcuri  
FTLofdogs@aol.com

Marsh Run Kennels  
(717) 331-8762  
4191 Sheely Rd.  
Waynesboro, PA 17268  
Bart Steven's  
marshrunkennels@comcast.net  
www.marshrunkennels.com

## PHOTOGRAPHERS

John Briggs Photography  
(717) 977-1238  
12 Landis Ave.  
Waynesboro, PA 17268  
John Briggs  
john@johnbriggsphotography.com  
johnbriggsphotography.com

Pictures Plus  
(717) 765-9223  
5256 Buchanan Trail East  
Waynesboro, PA 17268  
Julie Monn  
randy@picplus.com  
picplus.com

## PHYSICAL THERAPY

Waynesboro Physical Therapy  
and Sports Medicine  
(717) 655-5681  
118 Walnut St.  
Waynesboro, PA 17268  
Derek Kling  
derekklings@waynesboropt.com  
www.waynesboropt.com

## PLUMBING

Bilder & Sons Plumbing  
(301) 471-8621  
12365 Clermont Ave  
Blue Ridge Summit, PA 17214  
Kevin Bilder  
bilderandsons@yahoo.com  
fixyourpotty.com

Martz Plumbing, Heating & A/C, Inc.  
(717) 762-6115  
216 W. Fifth St.  
Waynesboro, PA 17268  
Jason Collier  
office@martzplumbing.com  
www.martzplumbing.com

## POWDER COATING

Biltwood Powder Coating  
(717) 593-9400  
217 N. Franklin St  
Waynesboro, PA 17268  
Jim McCleaf  
info@biltwoodcoatings.com  
biltwoodcoatings.com

## PRESS, PUBLICATIONS & RADIO

LocalNews LLC  
(717) 404-8726  
Dan Dedona  
contact@localnews1.org  
localnews1.org

NEWS TALK 1037FM/Magnum Broadcasting  
(877) 709-1037  
37 S. Main St.  
Chambersburg, PA 17201  
Patrick Ryan  
patr@fntalk1037.com  
newstalk1037fm.com

Verstandig Media  
(717) 597-9200  
10960 John Wayne Dr  
Greencastle, PA 17225  
Blake Truman  
btruman@verstandig.com  
verstandig.com

## PRINTING & SUPPLIES

Graphics Universal Inc  
(717) 597-3108  
25 Commerce Ave  
Greencastle, PA 17225  
Mark Witman  
mark@graphicsuniversal.com  
graphicsuniversal.com



J & M Printing  
(717) 762-8204  
114 Walnut St.  
Waynesboro, PA 17268  
Karen Beaver  
jm@mercercsburg.net  
www.mercercsburg.net

OSI ( Occupational Services Inc)  
717 263 9293 ext 241  
17 Redwood Street  
Chambersburg, PA 17201  
Jason Green  
jgreen@osinc.org  
osinc.org

## PROPERTY LEASING & MANAGEMENT

Antietam Realty, Inc.  
(717) 765-8011  
10796 Buchanan Trail East  
Waynesboro, PA 17268  
Jennifer Martin  
jmartin@antietamrealtyinc.com  
antietamrealtyinc.com

Avalon Townhomes  
(717) 749-7500  
4614 A2 Zana Court  
Waynesboro, PA 17268  
Beth Graves  
bgraves@washcomanagement.net  
washcomanagement.net

Bailey Investors  
(717) 762-6287  
10887 Old Forge Rd.  
Waynesboro, PA 17268  
Thomas Bailey  
tomshop@aol.com

J.C. BAR Properties, Inc.  
(717) 761-7801  
224 Saint Charles Way  
York, PA 17402  
Robert Gothier  
info@jcbarprop.com  
www.jcbarprop.com

Luminest, Inc.  
(717) 977-3900  
82 W Queen St  
Chambersburg, PA 17201  
Bonnie Zehler  
aross@luminest.org  
luminest.org

Meadow Breeze LLC  
(717) 765-6996  
626 North Grant St.  
Waynesboro, PA 17268  
Craig McCleaf  
meadowbreezellc@gmail.com

Potomac Leasing LLC  
(717) 387-1946  
PO Box 824  
Waynesboro, PA 17268  
Todd Wolff  
potomacleasingllc@gmail.com

Touhey Rentals  
(240) 527-9689  
18305 Summerlin Drive  
Hagerstown, MD 21740  
Angie Touhey  
oliviaogden@aol.com

WACCO Properties, Inc.  
(717) 765-0465  
38 West Main St  
Waynesboro, PA 17268  
Elizabeth Carey  
waccoproperties@gmail.com

## REAL ESTATE SERVICES

American Real Estate Salvage  
(717) 688-4983  
17 Lakeview Trl  
Fairfield, PA 17320  
Padraic Lee  
Americanrealestatesalvage@gmail.com  
www.americanrealestatesalvage.com

Hurley Auctions  
(717) 597-9100  
2800 Buchanan Trail East  
Greencastle, PA 17225  
Carole Stockslager  
info@hurleyauctions.com  
www.hurleyauctions.com

Iron Valley Real Estate of Waynesboro  
(717) 723-3351  
47 West Main Street  
Waynesboro, PA 17268  
Josh Mummert  
admin@IVREWaynesboro.com  
irvewaynesboro.com

Kandor Real Estate  
410 N. Grant St. Suite A  
Waynesboro, PA 17268  
(717) 762-8100  
Kristyn Martin  
Pahomes717@gmail.com  
www.KandorRE.com

Matt Gunder Coldwell Banker Realty  
(717) 765-2566  
1814 East Main Street  
Waynesboro, PA 17268  
Matt Gunder  
matt.gunder@cbhomes.com  
cbhomes.com

Mountain Valley Real Estate  
(717) 762-9329  
64 E. Main St.  
Waynesboro, PA 17268  
Carol Young  
mtnval@supernet.com

Paul Gunder Coldwell Banker Realty  
(717) 729-0200  
1814 E. Main St.  
Waynesboro, PA 17268  
Paul Gunder  
paul.gunder@cbhomes.com  
www.listwithpaul.com

RE/MAX Results - Arlene Unger Real Estate Team  
(240) 707-3200  
11235 Buchanan Trail East  
Waynesboro, PA 17268  
Arlene Unger  
arleneungersells@gmail.com  
www.arleneungersells.com

Ronnie Martin Realty  
(717) 765-6511  
1400 East Main St.  
Waynesboro, PA 17268  
Ron Benedict  
ron@ronniemartin.com  
ronniemartinrealty.com

## RECRUITING & JOB TRAINING

Ascend Career Services  
(717) 477-2745  
135 West King Street  
Shippensburg, PA 17257  
Patrick Metcalf  
taylor@ascendcareerservices.com  
www.ascendcareerservices.com

## RECYCLING

American Recycling Service, Inc.  
(717) 749-5751  
6200 Mount Zion Road  
Waynesboro, PA 17268  
Dave Cauffman  
amrecycleservice@aol.com  
www.americanrecycling.com

## RESTAURANTS

Arturo's Pizzeria  
(717) 749-7116  
8160 Anthony Highway  
Quincy, PA 17268  
Sunish Pradhan  
sunish6042@gmail.com  
arturosquincy.com

Cafe Del Sol  
(717) 762-1477  
11119 Buchanan Trail East  
Waynesboro, PA 17268  
Bill Socks  
billsox@centurylink.net  
delsolcafes.com

Delamor Enterprisers/McDonald's  
(717) 263-5641  
1520 Lincoln Way East  
Chambersburg, PA 17202  
Crystal Musselman  
cmusselman@delamorent.com

Monterey Pass Pub & Eatery  
(717) 387-5418  
11737 Old Rt 16  
Rouzerville, PA 17250  
Bob Backer  
bobbbacker@blazingtech.net  
www.facebook.com/Monterey-pass-pub-eatery-1530885157208535/

Montezuma of Waynesboro  
(717) 749-7452  
118 Walnut St.  
Waynesboro, PA 17268  
Jose Carlos Munoz  
rafaelmjr88@aol.com  
montezumamex.com/menu

Parlor House, The  
(717) 762-5415  
724 S. Potomac St.  
Waynesboro, PA 17268  
Dave Zimmerman

Subway - Walmart  
(717) 762-7770  
12751 Washington Township Blvd  
Waynesboro, PA 17268  
Sunita Eversole  
murali.nair02@yahoo.com

Subway - Waynesboro Mall  
(717) 762-2292  
608 E. Main St.  
Waynesboro, PA 17268  
Sunita Eversole  
murali.nair02@yahoo.com

Velvet Cafe, The  
(717) 762-7916  
145 W. Third St.  
Waynesboro, PA 17268  
Dave Wishard  
dwishard56@yahoo.com  
the-velvetcafe.com

## RETAIL

Burkes Outlet Bealls Inc  
(334) 790-2459  
1525 E. Main St.  
Waynesboro, PA 17268  
Christy Davis  
str30137@beallsinc.com

Graceful Beauty Boutique  
26 East Main St.  
Waynesboro, PA 17268  
(717) 372-5284 (work)  
Barb Venetta  
bvenetta1@yahoo.com  
www.facebook.com/groups/214561463841635/about

James Shoes  
(717) 762-1945  
76 West Main St.  
Waynesboro, PA 17268  
Diane  
Dholdaway42@gmail.com

Mason Dixon Creations  
(717) 331-9913  
30 E. Main Street  
Waynesboro, PA 17268  
Penny Misiak  
Sales@masondixoncreations.com  
www.masondixoncreations.com

## ROOFING

Bonded Applicators, Inc.  
(717) 762-1155  
68 E. Main St.  
Waynesboro, PA 17268  
Amy Weber  
amy@bondedapplicators.com  
bondedapplicators.com

## SANITIZING

CleanTek360  
(717) 404-6788  
1601 Manton Street  
Philadelphia, PA 19146  
Brandon Bowers  
brandon@cleantek360.com  
www.cleantek360.com

## SCHOOLS, COLLEGES, & UNIVERSITIES

Penn State Mont Alto  
(717) 749-6000  
1 Campus Drive  
Mont Alto, PA 17237  
Francis Achampong  
fka3@psu.edu  
montalto.psu.edu

Shalom Christian Academy  
(717) 357-2223  
126 Social Island Rd  
Chambersburg, PA 17202  
Marina Shannon  
mshannon@shalomca.com  
www.shalomca.com

Waynesboro Area School District  
(717) 762-1191  
210 Clayton Ave.  
Waynesboro, PA 17268  
wasd.k12.pa.us

## SIGNS, SCREEN PRINTING, & ENGRAVING

C-Ely Signs and Graphics  
(717) 762-9404  
310 West Main St  
Waynesboro, PA 17268  
Chad Ely  
celysigns@yahoo.com  
c-elysigns.com

Olympian Athletics  
(717) 765-8615  
55 W. Main St.  
Waynesboro, PA 17268  
Douglas Hartzok  
dhartzok@innernet.net  
oaprinting.com

Sanders Creations and Laser Graphics  
(717) 762-2461  
43 E. Main St.  
Waynesboro, PA 17268  
David Sanders  
handyman9@comcast.net  
www.sandersgraphic.net

Wayne Driscoll Custom Sign  
(717) 404-8642  
125 S. Broad St.  
Waynesboro, PA 17268  
Wayne Driscoll  
wayne@customsignstudio.com

Yard Card Angels  
(301) 202-4323  
10521 Susquehanna Ave  
Waynesboro, PA 17268  
Diane Sandy  
dmsandy@embarqmail.com

## SOCIAL CLUBS

American Legion  
(717) 762-5520  
63 E. Main St.  
Waynesboro, PA 17268  
Kristi Patterson  
manager@waynesborolegion.com  
waynesborolegion.com

Eagles Club, Inc.  
(717) 762-8688  
16 E. Main St.  
Waynesboro, PA 17268  
Lance Baker  
secretary@eaglesclubinc.org  
eaglesclubinc.org



Owl's Club, Inc.  
(717) 762-6215  
87 W. Main St.  
Waynesboro, PA 17268  
Chip Shaffer  
OwlsClub01@gmail.com

VFW Inc. # 695  
(717) 762-9009  
346 W. Main St.  
Waynesboro, PA 17268  
Beth Green  
waynesborovfw695@gmail.com  
www.vfw.org

SURVEYORS

R. Lee Royer & Associates  
(717) 762-5619  
10764 Buchanan Trail East  
Waynesboro, PA 17268  
Lee Royer  
leeroyerasociates@comcast.net  
www.rleeroyerasociates.com

TELECOMMUNICATIONS

Boost Mobile by CPA Wireless  
(717) 387-5952  
628 East Main St  
Waynesboro, PA 17268  
Carlos Perez  
boost@cpawireless.com  
www.cpawireless.com

Tele-Plus  
(800) 542-2733  
916 Elridge Dr  
Hagerstown, MD 21740  
Steve Cotton  
scotton@telepluscorp.com  
www.telepluscorp.com

TOURISM & TRAVEL SERVICES

Cruise Planners  
(717) 477-0111  
265 Newville Rd  
Shippensburg, PA 17257  
Carol DiBiase  
carol.dibiase@cruiseplanners.com  
cruisestravelresorts.com

Franklin County Visitors Bureau, Inc.  
(717) 552-2977  
15 South Main Street  
Chambersburg, PA 17201  
Janet Pollard  
jpollard@explorefranklincountypa.com  
www.explorefranklincountypa.com

TREE SERVICE

Bartlett Tree Experts  
(717) 765-0370  
951 Progress Road  
Chambersburg, PA 17201  
Derek Furry  
dfurry@bartlett.com  
barlett.com

UTILITIES

Mont Alto Municipal Authority  
(717) 749-5808  
P.O. Box 427  
Mont Alto, PA 17237  
Patricia Kocek  
mab@comcast.net  
montaltoborough.com

Washington Township Municipal Authority  
(717) 762-3108  
11102 Buchanan Trail East  
Waynesboro, PA 17268  
Sean McFarland  
manager@wtma.us  
www.wtma.us

VETERINARIANS

Wayne Heights Animal Hospital  
(717) 765-9636  
2085 E. Main St.  
Waynesboro, PA 17268  
John Barnes  
info@whahvet.com  
whahvet.com

Waynesboro Veterinary Clinic, Inc.  
(717) 762-0221  
11420 Anthony Highway  
Waynesboro, PA 17268  
Patrick McCullough  
wvc@waynesboroveterinaryclinic.com  
www.waynesboroveterinaryclinic.com

WASTE DISPOSAL SERVICES

Waste Management  
(717) 597-6915  
9446 Letzburg Road  
Greencastle, PA 17225  
Patrick Heraty  
mheraty@wm.com  
www.wm.com

A&B Dance Dimensions (717) 762-4456	Arturo's Pizzeria (717) 749-7116	Bradley Belford Agency, LLC (717) 256-0544	Country Sealcoatings & Paving (717) 762-0600	Eichholz Flowers (717) 762-7131	Graceful Beauty Boutique (717) 372-5284
2085 Productions (717) 387-2118	Ascend Career Services (717) 477-2745	Breast Cancer Awareness Cumberland Valley (301) 791-5843	Covenant Family Dentistry (717) 762-1515	Elevation Healthcare (717) 655-2509	Graphics Universal Inc (717) 597-3108
AAA Paving & Excavating, Inc. (717) 762-4940	Avalon Townhomes (717) 749-7500	Brio Coffeehouse, Inc (717) 889-0412	Crown Beauty and Barber Lounge LLC (717) 387-5215	Elite Window Fashions (717) 762-5627	GRC General Contractor Inc. (717) 762-1116
Accredited Services, Inc (717) 762-7065	B&D Lawn & Landscape, Inc. (717) 765-4551	Buchanan Auto Park (717) 762-1107	Cruise Planners (717) 477-0111	Erin Shank Insurance Agency/ State Farm (717) 762-7101	Greater Chambersburg Chamber of Commerce (717) 264-7101
Aflac/Destiny Witmer (240) 310-8992	B&H Lawn and Floral Inc. (717) 762-2439	Buchanan Automotive (717) 762-3141	Dairy Queen (717) 762-8944	Evangelical Lutheran Church (717) 762-9151	Greater Waynesboro Chamber of Commerce (717) 762-7123
AFS Insurance & Financial Service (717) 762-5780	Bailey Investors (717) 762-6287	Burkes Outlet Bealls Inc (334) 790-2459	DanFoss/AAIM Controls (717) 765-9100	F&M Trust (717) 762-2188	Green Arbor Landscape, LLC (717) 762-9344
Alexander Hamilton Memorial Free Library (717) 762-3335	Bartlett Tree Experts (717) 765-0370	Bybel Rutledge, LLP (717) 655-7096	Dave Shockey Auto Body (717) 762-7106	F.A.C. Finds (717) 476-1636	Green Grove Gardens (717) 597-0800
American Custom Auto Care (717) 387-0291	Beautifully Designed Beauty Salon (240) 310-4883	C K Auto and Truck LLC (717) 765-4500	David M. Green Bookkeeping & Tax Service (717) 655-2560	Fil-Tec Inc. (301) 824-6166	Greencastle-Antrim Chamber of Commerce (717) 597-4610
American Legion (717) 762-5520	Beavers Auto Body & Collision (717) 762-8322	C-Ely Signs and Graphics (717) 762-9404	DD & Son, Inc. (717) 765-8559	First Start Partnerships (717) 263-8019	Grove-Bowersox Funeral Home, Inc. (717) 762-2811
American Real Estate Salvage (717) 688-4983	Beck Manufacturing (717) 762-9141	Cafe Del Sol (717) 762-1477	Decker Electrical Services, Inc. (717) 762-4111	Five Forks Brethren in Christ Church (717) 762-2991	Guernsey, Inc (717) 948-5238
American Recycling Service, Inc. (717) 749-5751	Beck, Stephen E. (717) 762-9423	Calvary Assembly of God, Inc. (717) 762-5432	Delamor Enterprisers/McDonald's (717) 263-5641	For the Love of Dogs LLC (410) 241-8154	Habitat for Humanity of Franklin County (717) 267-1899
Anthony Highway Auto Sales & Service Inc (717) 765-4949	Beer Shed, The (717) 762-3711	Camp Penn (717) 762-2693	Denny's Garage (717) 749-5546	Fort Ritchie Community Center (301) 241-5085	Hammond's Painting (717) 387-1542
Antietam Eye Associates, Inc. (717) 387-5657	Bell Insurance, Inc. (717) 597-1151	Capitol Theatre Center 717-263-0202	Dice Office Equipment (717) 597-0300	Frances Miller (717) 762-2835	Hawley Memorial Presbyterian Church (717) 794-2637
Antietam Humane Society, Inc. (717) 762-9091	Bilder & Sons Plumbing (301) 471-8621	Center of Balance, LLC (717) 643-1404	Dick, Phyllis Alta (717) 794-5120	Franklin County Area Development Corporation (717) 263-8282	Hearthstone Retirement Home & In-Home Care Services (717) 762-6313
Antietam Pharmacy (717) 762-1164	Biltwood Powder Coating (717) 593-9400	Ceramic Arts Center of Waynesboro, The (717) 372-7906	Dog Doodie Pawtrol (717) 655-6203	Franklin County Commissioners (717) 264-4125	Herbert, Rowland & Grubic, Inc (717) 263-2070
Antietam Realty, Inc. (717) 765-8011	Bistro at 633 Brewing, The (717) 387-5818	Cermak Technologies, Inc. (717) 762-8234	DSS Law (717) 762-1160	Franklin County Community Foundation (717) 236-5040	Hess Auto Body & Large Truck Repairs (717) 267-6091
Antrim Insurance Agency, Inc. (717) 762-4565	Blaise Alexander Chevrolet (717) 597-2131	Christ United Methodist Church (717) 762-7042	Dunkin Donuts / Ridhi Siddhi PA, Inc (732) 822-1173	Franklin County Dispute Resolution Center (717) 762-3374	Hess Custom Builders (717) 762-2902
Antrim Machine Co. / TA Castle Machine (717) 369-3184	BLAST (240) 344-5093	CleanTek360 (717) 404-6788	Eagles Club, Inc. (717) 762-8688	Franklin County Visitors Bureau, Inc (717) 552-2977	Hoff, Deborah K., Attorney (717) 762-0371
APX Null Machine Shop (717) 597-3330	Blue Ridge Fire & Rescue (717) 794-2323	Cobblestone Hotel & Suites (717) 765-0034	Edge Fiber Solutions LLC (410) 207-0875	Friends of the Monterey Pass Battlefield, Inc (717) 762-5619	Holmes Watercolors (240) 315-8454
Arthur, Dan (717) 762-3873	Blue Ridge Risk Partners (717) 762-3147	Coldwell Banker Realty (717) 264-7999	Edward Jones - Bob Correll (717) 765-0166	G. W. Electric Company, Inc. (717) 597-7137	HomeRite Windows & Doors (717) 749-4874
Arts Alliance of Greater Waynesboro/ Destination ARTS' (717) 655-2500	Bonded Applicators, Inc. (717) 762-1155	Congressman Dr. John Joyce (717) 753-6344	Edward Jones - Douglas W. Smith (717) 762-0911	Ganoe Paving Inc (717) 597-2567	Horizon Goodwill Industries (301) 733-7330
	Boost Mobile by CPA Wireless (717) 387-5952	Connection, Inc. The (717) 387-2403	Edward Jones- Marissa Correll (717) 655-2244	Guardian Booth (877) 963-8190	
	Borough of Waynesboro (717) 762-2101				



Hurley Auctions (717) 597-9100	Law Office of Jeffrey S. Evans (717) 762-1415	Misner, Timothy W., Attorney At Law (717) 765-8080	Owl's Club, Inc. (717) 762-6215	Rainbow International of Waynesboro (717) 788-3032	Shippensburg Area Chamber of Commerce (717) 532-5509
Iron Valley Real Estate of Waynesboro (717) 723-3351	LBG Lending Services, LLC (717) 788-4988	Modern Casework Inc. (717) 331-1543	Parlor House, The (717) 762-5415	RE/MAX Results - Arlene Unger Real Estate Team (240) 707-3200	Shippensburg Small Business Development Center (717) 477-1935
ISO Advantage, LLC (717) 339-8365	Lehmans Carpet (717) 264-7070	Mont Alto Borough (717) 749-5808	Pat Toomy (717) 782-3951	Real Kill Termite & Pest Control, LLC (717) 762-8448	Showalter & Miller, CPAs (717) 762-8116
Ivy Hill Farm (240) 527-9268	Leland of Laurel Run, The (717) 749-0083	Mont Alto Municipal Authority (717) 749-5808	Patriot Federal Credit Union (717) 263-4444	Red Roof Storage (717) 765-0071	Smith & Associates (717) 762-6861
J & M Printing (717) 762-8204	Lightning Industrial Tool Grinding (717) 762-5211	Monterey Pass Pub & Eatery (717) 387-5418	Paul Gunder Coldwell Banker Realty (717) 729-0200	Renfrew Museum and Park (717) 762-4723	Specialty Granules LLC (717) 794-2184
J.C. BAR Properties, Inc. (717) 761-7801	LIU12 Franklin County Literacy Council (717) 504-4459	Montezuma of Waynesboro (717) 749-7452	Paul W. McCarney Heating/Cooling (717) 762-8312	Rent A Lane (717) 762-3762	Spring of Hope Prayer Counseling (717) 762-0234
Jake's Electric, LLC (717) 977-6382	LocalNews LLC (717) 404-8726	Montgomery Collections 1-301-717-3829	Peace and Serenity Spa (717) 372-1556	Representative Paul Schemel (717) 749-7384	St. Mary's Episcopal Church (717) 762-1930
James Shoes (717) 762-1945	LQ Design LLC (717) 387-9656	Mountain Valley Real Estate (717) 762-9329	Pediatric Specialists of F ranklin County, P.C. (717) 765-6621	Restoration Church of God in Christ (717) 655-5783	State Farm Insurance - Chad Slimmer (717) 762-0650
Jamison-B.M.P., LLC (240) 313-7914	Luminest, Inc. (717) 977-3900	Musselman & Creager, LLP (717) 762-0331	Penn Mar Oil, Div. of Tevis Energy (717) 762-3811	Rich Fehle Singer/Songwriter (717) 552-1766	Sterling Financial Management, Inc. (301) 733-7777
JB Technical Solutions Inc. (717) 316-0078	M & T Bank (717) 765-3315	My Benefit Advisor/ChamberChoice (800) 377-3539	Penn National Insurance (800) 388-4764	Roger's Auto Sales (717) 762-2700	Stoneham's Motorsports, Inc. (717) 762-7420
JM Automotive Repair, LLC (717) 762-1456	Mainstreet Waynesboro, Inc. (717) 762-0397	New Enterprise Stone & Lime (717) 267-2244	Penn State Mont Alto (717) 749-6000	Ronnie Martin Realty (717) 765-6511	Strausbaugh, Charles L., CPA, P.C. (717) 765-8515
John Briggs Photography (717) 977-1238	Manitowoc Crane-Group - Grove Worldwide (717) 597-8121	Newcomer's Auto & Truck Parts (717) 762-1532	Piatt Law PLLC (717) 655-5487	Rough Edges Brewing (717) 655-7042	Strickler Agency (717) 263-4179
Johnson Controls (717) 762-2121	Manufacturers' Association (717) 843-3891	NEWS TALK 1037FM/ Magnum Broadcasting (877) 709-1037	Pictures Plus (717) 765-9223	Rouzerville Business Association (717) 765-8662	Subway - Walmart (717) 762-7770
JZ Financial Management (717) 660-0709	Marks, Dick (717) 762-7343	Nolan Masonry LLC (717) 552-4874	Potomac Leasing LLC (717) 387-1946	S. Stine & Son Lawn & Garden (717) 729-5348	Subway - Waynesboro Mall (717) 762-2292
K & M Outdoor (717) 765-0010	Marsh Run Kennels (717) 331-8762	NuVogue Hair & Tanning Studio (717) 765-0558	Potter, Lucinda D., CPA (717) 762-7185	Saint Andrew Catholic School (717) 762-3221	Sue James, Author (717) 809-1135
Kandor Real Estate (717) 762-8100	Martz Plumbing, Heating & A/C, Inc. (717) 762-6115	Oasis Senior Advisors (240) 866-0064	Pregnancy Ministries, Inc. (717) 655-5603	Sanders Creations and Laser Graphics (717) 762-2461	Sugar Hollow Farm Alpacas, LLC (717) 749-7056
Keller, Keller, Beck & Ross LLC (717) 762-3331	Mason Dixon Creations (717) 331-9913	Ocker Accountants & Consultants (717) 762-3161	Primerica Financial Services (717) 749-5421	Savage Family Pharmacy (717) 762-2915	Sunshine Lanes (717) 762-3815
Keystone Ford (717) 264-5104	Matt Gunder Coldwell Banker Realty (717) 765-2566	Olde Town Touch (301) 302-7311	ProTube, Inc. (717) 765-9400	SEK, CPAs & Advisors (717) 263-3910	T E Connectivity (717) 765-3283
Keystone Health (717) 709-7900	McLaughlin's Energy Services (717) 762-5711	Olympian Athletics (717) 765-8615	Quincy & Waynecastle Storage (717) 749-5944	Senator Doug Mastriano (717) 264-6100	Tele-Plus (800) 542-2733
Keystone Valley Electric, Inc. (717) 762-8592	Meadow Breeze LLC (717) 765-6996	Onpoint Logistics Inc. (915) 309-5548	Quincy Township Supervisors (717) 762-5679	Shadetree Garage (717) 655-5703	Tesla Payments (717) 460-1160
Kulla, Barkdoll and Stewart, P.C. (717) 762-3374	Michaux Brewing Company (717) 765-7474	Operation Second Chance (301) 972-1080	Quincy Village (717) 749-2300	Shalom Christian Academy (717) 357-2223	The Amberson House (717) 762-8112
L.T. Rush Stone and Fireplace (717) 765-6941	Middletown Valley Bank (717) 788-3250	OSI ( Occupational Services Inc) 717 263 9293 ext 241	R. Lee Royer & Associates (717) 762-5619	Sherwin-Williams Company (717) 762-3913	The Cupcake Gypsy (240) 625-2212
Lake House Distilling Company (301) 573-6988		Otterbein Church - Waynesboro (717) 762-7147	R. Thomas Murphy & Associates, P.C. (717) 762-1032		

The House of Time (717) 398-0799	Waste Management (717) 597-6915	WDStorage (717) 762-1755			
The Institute (717) 762-0373	Wayne Driscoll Custom Sign (717) 404-8642	Wee Scot Book Shoppe (717) 816-6704			
The Law Offices of Samantha K. Wolfe (717) 655-2676	Wayne Heights Animal Hospital (717) 765-9636	Wellspan Waynesboro Hospital (717) 765-4000			
The Wildflower Marketplace (240) 310-4264	Waynesboro Area School District (717) 762-1191	Wild West Motors (717) 655-7260			
Thompson Oil Company, Inc. (717) 762-3011	Waynesboro Area YMCA (717) 762-6012	Wishard's Garage & Trucking (717) 762-4143			
Today's New Start Learning Center (717) 387-5692	Waynesboro Beneficial Fund (717) 762-7123	Yard Card Angels (301) 202-4323			
Tom Shockey Collision, Inc. (717) 765-8000	Waynesboro Community & Human Services (717) 762-6941	Warehouse Cinemas (240) 608-4900)			
Touhey Rentals (240) 527-9689	Waynesboro Community Concert Association (717) 609-6853	Zody's Moving & Storage, Inc. (717) 762-4815			
Tri State Event Planning Services (717) 262-8839	Waynesboro Construction Company, Inc. (717) 762-1151				
Trident Enterprises International Inc. (717) 762-5912	Waynesboro Country Club (717) 762-8401				
Trinity United Church of Christ (717) 762-7191	Waynesboro Early Learning Center (717) 762-9711				
Truist Bank (717) 762-3121	Waynesboro Design Services, Inc. (717) 765-4569				
Tuscarora Area Chamber of Commerce (717) 328-5827	Waynesboro Flooring (717) 788-4754				
United Way of Franklin County (717) 262-0015	Waynesboro Industrial Development Corporation (717) 762-7123				
Velvet Cafe, The (717) 762-7916	Waynesboro Lions Club (717) 762-7570				
Verstandig Media (717) 597-9200	Waynesboro Physical Therapy and Sports Medicine (717) 655-5681				
VFW Inc. # 695 (717) 762-9009	Waynesboro Summer Jubilee, Inc. (717) 762-7123				
Visiting Angels (717) 749-0458	Waynesboro Theatre (717) 387-5335				
WACCO Properties, Inc. (717) 765-0465	Waynesboro Veterinary Clinic, Inc. (717) 762-0221				
WALL (Waynesboro Lioness Lions) (717) 794-5120	Waynesboro Water Works, LLC (717) 762-6677				
Washington Township Municipal Authority (717) 762-3108	WBO Health & Fitness (717) 655-5024				
Washington Township Supervisors (717) 762-3128					





*The Cupcake Gypsy*

BAKERY AND CAFE  
118 WALNUT ST SUITE 101



COFFEE, BURSTING BOBA SMOOTHIES,  
COOKIES, BROWNIES & BARS,  
GOURMET CUPCAKES & CAKES,  
SIGNATURE SCONE CO. SCONES  
BAKED FRESH DAILY,  
AUTHENTIC NY CHEESECAKES &  
KETTLE COOKED NY BAGLES,  
**LUNCH HOUR 11-3**  
SOUP, SALAD, AND SANDWICHES  
SEE FACEBOOK FOR HOURS  
CARRY OUT, DINE IN, CURBSIDE & DELIVERY